

you can  
**Canon**

**iR6020i/iR5020i** SERIES

*Dynamic Java based devices to fulfil  
workflow needs now and in the future*



OFFICIAL SUPPLIER





*The ultimate in intelligent,  
cost-effective communication*

Take advantage now of powerful business and workflow benefits with Canon's unique next generation Java based MEAP (Multi-function Embedded Application Platform) enabled networked printer/copiers. Establishing new benchmarks of productivity in every aspect of document output and office communication, the iR6020i and iR5020i can transform the way that your organisation captures, manages and distributes its documents not just now, but long into the future. You can customise your own device with bespoke or off the shelf applications that can allow you to integrate your MFP devices into your workflow.

In the electronic age, many organisations are struggling to keep up with the sheer volume of digital information. With the iR6020i/iR5020i, acting as a central document hub you can get the right information to the right people at exactly the right time.

#### SIMPLIFY YOUR OFFICE

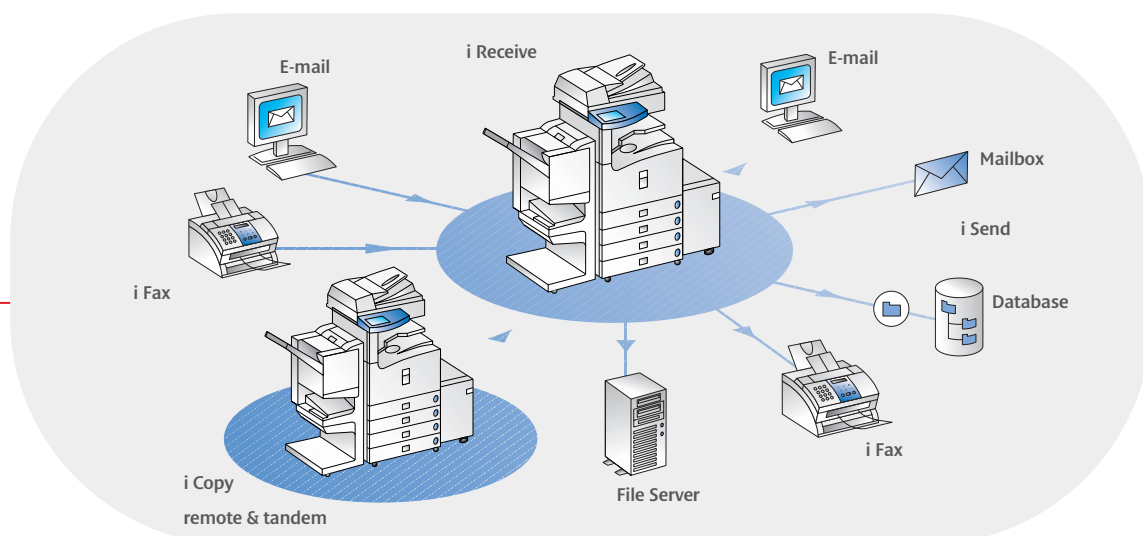
Most organisations have a wide variety of disparate devices, which take up valuable space. By combining functions and sharing them with everyone on the network, you can increase cost effectiveness and save space. The iR6020i/iR5020i combines everything you need in a single device with scan, copy and printing as standard functions.

#### SHARE INFORMATION FASTER THAN EVER

The intelligent send functions of the iR6020i/iR5020i cut document distribution costs and increase productivity. In a single operation, documents can be scanned directly into the system and distributed digitally to a file server for storage, regularly used folder, individual e-mail addresses or internet fax. Eliminating the cost of distributing hard copy documents saves time, money and space. Conversely, the iR6020i/iR5020i can receive and route all incoming information so that it can be captured, managed and distributed by all authorised users on the network. The Scanned Image Preview function enables you to check that a document has scanned correctly before sending.

#### LDAP ENHANCES COMMUNICATION CAPABILITIES FURTHER

Intelligent Sending is even easier and more efficient, because both the iR6020i/iR5020i support LDAP (Lightweight Directory Access Protocol). This integrates the 'send to e-mail' function with your company address book, and enables more efficient management of accessible e-mail addresses. Multiple local address books no longer need to be manually updated.







#### ENHANCED MAIL BOX SECURITY

Secure control and tracking of important documents both internally and externally is absolutely critical. Documents can be printed securely directly from your PC via the secure print function, where printing can only begin when the correct password is given at the device.

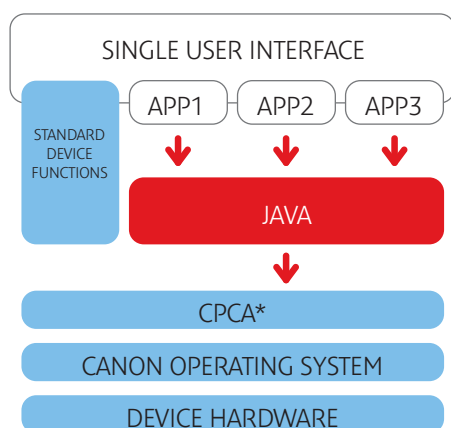
To push productivity and performance further, you have the ability to combine, edit and store these securely printed documents from a diverse range of sources.

If you don't want the documents immediately, you can temporarily hold data on the hard disk of the device. You can then access them from a password protected mailbox, which can be created for both individuals and groups.

In addition, the iR6020i/iR5220i have the ability to automatically identify and authenticate each user with your active directory service. Device administrators can select the level of authentication required from Department ID Management, Simple Device Login to Single Sign On.



## MEAP STRUCTURE



## THE NEXT GENERATION

MEAP (multi-functional embedded application platform) is a unique platform designed to meet the next generation business needs. It's a way to deliver true customisation in an affordable and highly effective way.

## TRUE CUSTOMISATION AND EASY INTEGRATION

MEAP is based on familiar Java language which is ideal for developing complete custom applications quickly and effectively.

JAVA ensures absolute synergy between a device and its applications - delivering cohesive, scalable performance as well as simplified operation. It can provide solutions that meet your precise needs, if they change so too can the functionality of the iR6020i/iR5020i offering fantastic investment value.

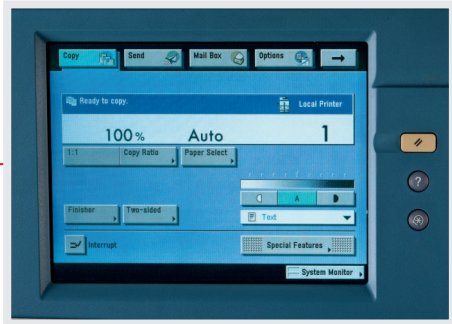
## WORK THE WAY YOU WANT

Canon is continuously developing embedded applications to run on iR6020i/iR5020i MEAP enabled devices. We aim to offer an extensive range of applications not only through Canon business consultants but also through our partnerships with leading independent software companies and developers.

## DEVELOPER PROGRAMME

MEAP offers an exciting opportunity for independent software developers and in house development teams. It provides unlimited potential for expert skills in the office automation market, to bring true customisation to the multifunctional device. For further information on the Canon Business Solutions Developer programme visit: [www.bsdp.canon-europe.com](http://www.bsdp.canon-europe.com)

\* (CPCA - Common Peripheral Controlling Architecture)

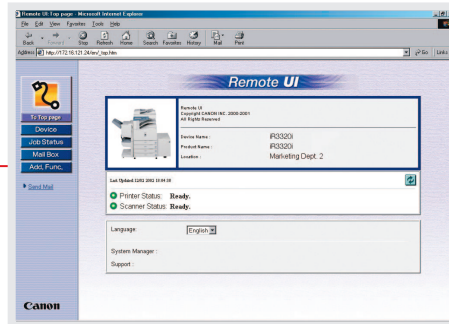


### INTUITIVE, USER- FRIENDLY OPERATION

The iR6020i/iR5020i feature full size, full colour touch screens as a user interface for fast and effortless operation. All functions are easily accessed and intuitively structured via the clear message display. This ease is carried right through from smooth paper handling to problem-free finishing – with enhanced reliability and durability ensuring consistent and continuous output.

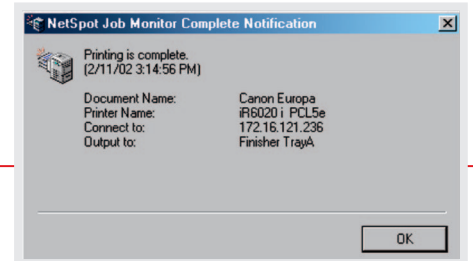
### TOTAL CONTROL

Canon's NetSpot® Suite simplifies operation and management for both end users and network administrators. NetSpot Console is a web-based utility capable of installing and managing Canon networked systems. NetSpot Job Monitor helps track and control the management of print jobs, right up to end-of-job notification.



### REMOTE USER INTERFACE

Simplicity is extended to every network user through Canon's remote user interface. With its built-in web browser function, it allows instant and easy access to the iR6020i/iR5020i from every networked PC. Users can issue print commands, check on machine status, access their customised mailbox, edit address lists and carry out a wide range of functions. Jobs stored in the mailbox can be merged, edited, re-directed, saved or securely printed. And networked users can also share advanced finishing accessories that are not available on local machines.



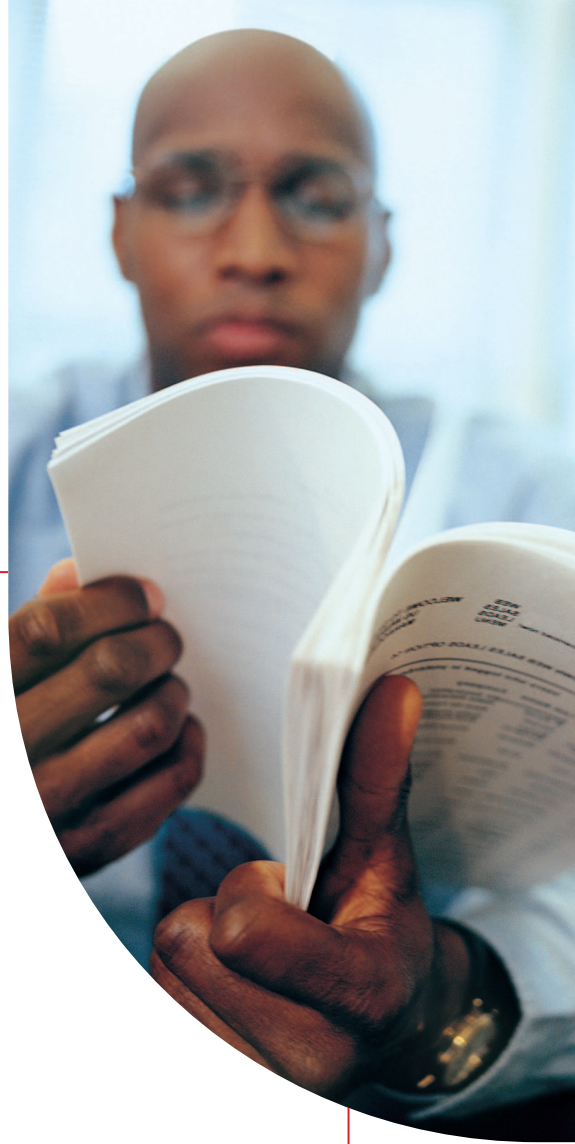
### INTELLIGENT COPYING

Intelligent copying facilities offer a host of other benefits. With tandem copying users can select another iRi\* device from a list of up to seven, on the network, splitting the workload between 2 devices as well as sharing advanced finishing options.

Remote copying allows, networked users to take advantage of system accessories not available on local devices (such as advance finishing), enabling finished copies to be outputted on another iRi\*

A copy reservation function allows users to store up to five copy jobs in memory, while current jobs are being processed. Other functions include job build, scan-once-print-many, auto image orientation and convenient job notification by e-mail for completed work.

\*Tandem and remote copying feature can only be performed between the same two device.



## PROFESSIONAL FINISHING AND ADVANCED OPTIONS

Let the iR 6020i/5020i automate your document handling chores so you can perform other tasks.

There's a choice of two finishers that facilitate the delivery of professional-looking documents.

The finisher F1 supports an output capacity of 2,000 sheets as well as multi-position stapled output ready for fast distribution. The saddle finisher F2 produces saddle stitched, V-folded booklets for both copying and printing.

An optional hole punch delivers two-hole punched output, catering for both A3 and A4 paper in portrait and landscape orientation.

Output for all standard paper sizes – including a large A3 format is supported. As the system is equipped with optional tray less duplexing, this versatility is extended to two-sided output. When all of this is combined with the high capacity paper supply of the iR6020i/iR5020i (4,150 sheets standard plus an optional 3,500-sheet paper deck) full production output is supported.



# iR6020i/iR5020i MEAP Specifications

Base Specification	
Type	Digital multi-function system
Functions	Print, copy, intelligent send, intelligent receive
Speed	60ppm A4 (iR6020i) 50 ppm A4 (iR5020i)
First-copy Time	3.8 seconds from platen glass/5.1 seconds from ADF
Warm-up Time	5 Minutes or less
Acceptable Originals	Sheets, books, 3-dimensional items up to 2kg
Max.Original size	A3
Max Copy Size	A3
Min Copy Size	ASR
Multiple Copies	1 to 999
Enlargement /Reduction	25% - 400% in 1% increments
Copy/Scanning Resolution	1200 dpi x 600 dpi
Printing Resolution	600 dpi x 600 dpi (2400 dpi x 600 dpi interpolated)
Halftone	256 gradations of grey
Image Server Memory	Standard 10 GB HDD,256MB
Max.Mail Boxes Supported	100
Duplexing	Automatic trayless. Duplex ADF.
Paper Supply	2 x Front loading tray (1500shts)2 x paper cassettes: (550 shts), bypass (50 shts)
Paper Weights	64-200gsm <sup>2</sup> (cassette) 64-200gsm <sup>2</sup> (bypass)
Power Supply	230V, 50/60Hz
Dimensions (WxDxH)	643 x 743 x 1136 mm
Weight (kg)	210kg
Communication Interface	
Topology	Ethernet™ Token Ring™ (optional)
Speed	10/100Mbps Ethernet
Protocols Supported	TCP/IP,IPX/SPX™, EtherTalk, SMB for printing, Apple Talk
Intelligent Send Function	
Preview	Multi-page Document Preview function
Access	Single Sign On (Windows 2000 Server), Single Device Log In (SDL)
Sending Methods	E-mail, File Server (FTP,SMB,NCP)
Address Book Capacity	LDAP, and ad hoc entry and storage. (Local storage 1800 addresses)
File Format	Single page TIFF & PDF, multi-page TIFF & PDF
Sending Sizes	A5-A3
Sending Resolution	100 x 100 dpi, 200 x 100 dpi, 200 x 200 dpi, 300 x 300 dpi, 200 x 400 dpi,400 x 400 dpi, 600 x 600 dpi

Intelligent Copy Function	
	Tandem copy
	Remote copy
Multi PDL Network Printing	
Speed	60ppm A4 (iR6020i) 50 ppm A4 (iR5020i)
Resolution	Up to 2,400 x 600 dpi
PDL Support	PCL® 5e /PCL6 /Postscript®3™ emulation
Image Server Memory	10GB hard disk,256MB RAM
Network OS	Novell Netware v3.2, 4.1, 4.11, 4.2,5; Windows® 95/98/NT/2000/XP; Solaris 1.x,2.25 or later; Apple system 7.6 or higher
iR5020N/iR6020N	
Function;	Device designed for use with eCopy SSOP
Base Specifications:	Same as iR5020i/iR6020i except does not have intelligent Send Function
eCopy Specification:	Please see eCopy SSOP brochure for full details
Optional Accessories	
Finisher F1 • Saddle Finisher-F2 • Punching Unit A1/C1 • Paper Deck-G1 • Shift Tray B1	
• Card Reader-C1 • Token Ring • USB Application • iR Security Kit • Document Tray	

™ All company and/or product names are trademarks and/or registered trademarks of their respective manufacturers in their markets and/or countries. Canon reserves the right to change specifications without notice.

you can  
**Canon**



Europe, Africa and Middle East  
**Canon Europa N.V.**  
P.O. Box 2262, 1180 EG Amstelveen,  
the Netherlands  
[www.canon-europe.com](http://www.canon-europe.com)

English Edition 0040W044  
© Canon Europa N.V., 2003 (0903)

**Canon (U.K.) Limited**  
Woodhatch, Reigate  
Surrey RH2 8BF  
Telephone No: 01737 220000  
Facsimile No: 01737 220022  
[www.canon.co.uk](http://www.canon.co.uk)

