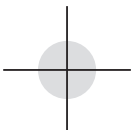
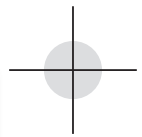


Canon

 **imagePRESS™**
C6000VP



INTRODUCING THE CANON imagePRESS C6000VP DIGITAL PRESS

**Strengthen Your Production Capabilities
with a Cost-Effective, Versatile Digital Press**



DELIVERING THE IMAGE QUALITY AND VERSATILITY YOUR BUSINESS NEEDS

With the tremendous success of the imagePRESS C7000VP digital press for production printing, Canon continued its tradition of bringing world-class color-imaging expertise to new markets. The imagePRESS C6000VP digital press is built on the same core architecture as the Canon imagePRESS C7000VP digital press and priced to be more accessible to a broader range of printing operations.

The imagePRESS C6000VP digital press is ideal for mid- to large-size production environments that want a full-featured digital press that makes good business sense. This digital press gives you the:

- power to handle increasingly complex job requirements
- speed and reliability to meet tight deadlines
- image quality to satisfy the most discriminating customers
- versatility to keep pace with evolving production needs

With its robust set of image-processing, color-management, and in-line finishing technologies, the imagePRESS C6000VP digital press enables you to handle almost any type of job a customer might request.

The press produces true 1200 x 1200 dpi color output on a wide variety of stocks used for direct mail pieces, newsletters, marketing collateral, and saddle-stitched and perfect-bound booklets.

Whether printing on lightweight booklet stocks or heavier cover stocks, the imagePRESS C6000VP digital press can operate at 60 letter-sized pages per minute, regardless of paper weight. This consistency enables you to confidently and accurately schedule the steady volume of work needed for optimum productivity and profitability.

The imagePRESS C6000VP digital press is ideal for:

- **Small- to Mid-Size Commercial Printers** that are looking for a digital press to complement their offset offerings.
- **Mid- to Large-Size Print-for-Pay Companies** that want to add short-run document production to their existing digital output services.
- **Central Reprographic Departments (CRDs) and In-Plants** that need to control color-printing costs and delivery times without sacrificing quality.

Workflow Efficiency and Innovation for More Profitable Printing



Success in production printing demands the ability to smoothly and quickly move jobs through prepress and production into finishing and distribution.

Canon's imagePRESS Workflow Solutions Program provides a selection of hardware and software technologies that can automate and simplify every phase of your workflow.

We deliver solutions that can help:

- eliminate weak links in your existing workflows;
- optimize your ROI by connecting to software or hardware you already use; and
- build a completely new workflow for maximum efficiency.

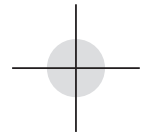
Canon offers complete solutions that integrate with industry standards, such as JDF and PPML, and will support ongoing developments in digital workflows. In addition, Canon will continue to seek or develop new innovations in color management, finishing, customized communications, and business development.



IMAGE QUALITY



The imagePRESS C6000VP Digital Press Provides Consistent, Accurate Color, And Offset-like Image Quality.



ADVANCED IMAGE REPRODUCTION

Your customers will see a noticeable difference in the quality of output from all Canon imagePRESS models.

Canon's intensive R&D investment in photography, color science, and color imaging is reflected in technologies that enable the imagePRESS C6000VP digital press to reproduce a wide tonal range as well as fine details in highlights and shadows of images and across the entire color gamut.

With a true 1200 x 1200 dpi resolution and 256 levels of gray-scale, the imagePRESS C6000VP digital press consistently reproduces clear, sharp images with lifelike skin tones, smooth gradients, and color accuracy needed to satisfy even the most perceptive buyers of printed materials.

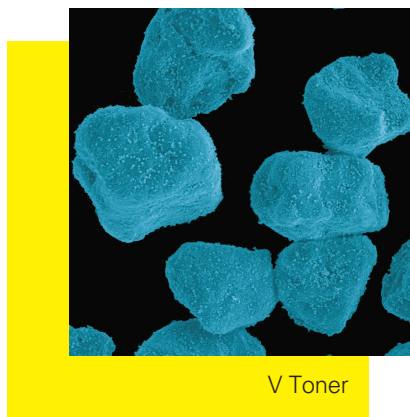


OUTPUT THAT FEELS LIKE OFFSET ON YOUR PAPER OF CHOICE

Canon's imagePRESS C6000VP digital press uses revolutionary imaging, fusing, and toner technologies to generate printed pages that look and feel as if they came from an offset press.

Canon's oil-free V Toner uses exceptionally small particles (averaging 5.5 microns) and, when applied with Canon's proprietary fusing technology, the toner remains even and flat, producing a smooth-to-the-touch surface. It's nearly impossible to feel where the toner begins and ends!

Not only won't you feel any raised toner, but Canon's Gloss Optimization also helps ensure that you won't see any differences between the gloss of the printed image and the paper. The Media Library that optimizes stocks for smooth feeding through the press also automatically optimizes gloss levels. As a result, the remarkable offset-like feel is replicated on whatever substrate you select.



V Toner

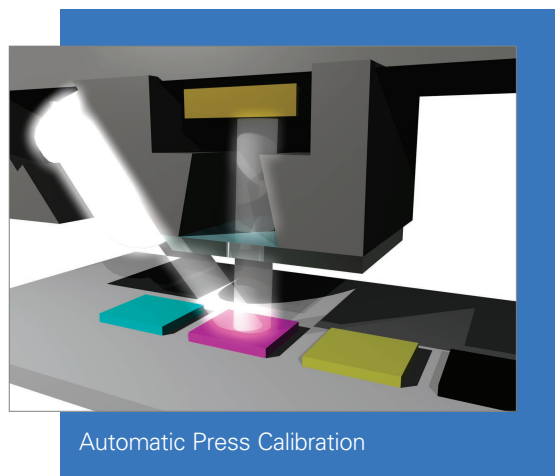
COLOR CONSISTENCY

Your customers expect each piece in a print run to look just like every other piece. This sounds simple enough. But until now, it's been one of the most difficult engineering hurdles to overcome, particularly for digital presses that must handle numerous digital color images, print on a variety of paper types, and operate in environmental conditions that vary from day to day, week to week, and month to month.

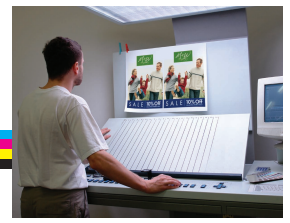
The **imagePRESS C6000VP** digital press incorporates three sophisticated technologies that help produce consistent color with very little intervention by the press operator.

- **Automatic Press Calibration** maintains the necessary color densities without constant oversight by press operators.
- **Advanced Developer Technology** constantly supplies fresh developer. This helps create consistent color across the width of every page.
- **Real-Time Calibration** measures color density levels while the job is in progress. Automatic adjustments help ensure that the first print in a job matches the last print and every print in between.

Together, these technologies help ensure that future reprints will look the same as the first prints.

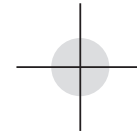


Automatic Press Calibration



TAKE A TOUR OF THE imagePRESS C6000VP DIGITAL PRESS

See how Canon innovations work together to yield better image quality, greater productivity, and maximum versatility.



The **Document Inserter*** allows users to insert preprinted cover sheets into a saddle-stitched job.

The **Puncher Unit*** provides accurate two- and three-hole punch capabilities with no set limits.

The **Booklet Trimmer*** attaches to the Saddle Finisher and evenly trims booklets up to 80 pages.** The output tray holds up to 30 saddle-stitched booklets.

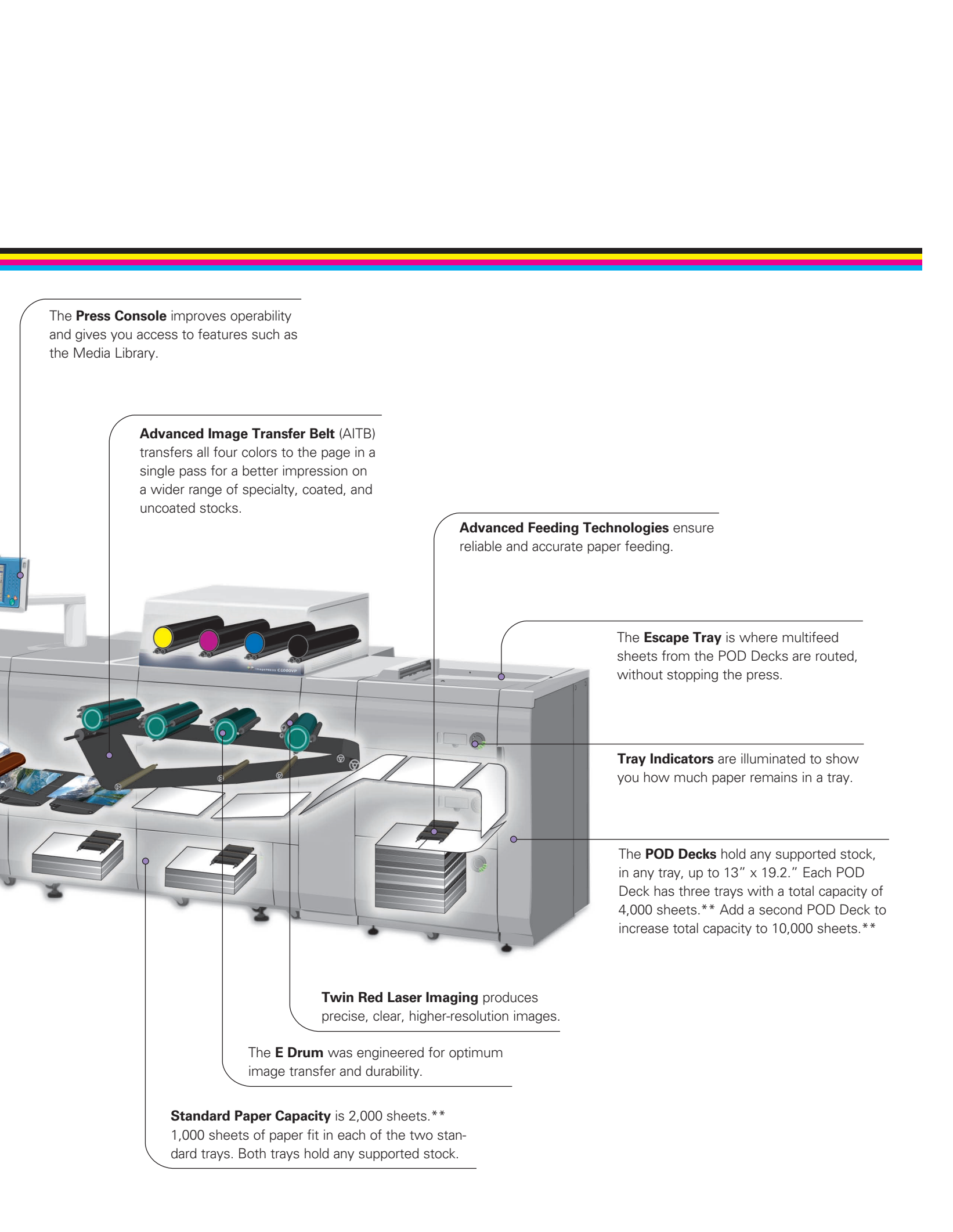
The **Saddle Finisher** creates saddle-stitched booklets up to 80 pages (20 sheets) in length. The Saddle Finisher and Plain Finisher provide corner- and doubled-sided staples up to 100 sheets** and stack on two trays for an output capacity of 5,000 sheets.**

The **High-Capacity Stacker** offsets and straightens stacks up to 5,000 sheets* on a removable dolly, making the transition to offline finishing easier.

Dual Fusing allows the press to maintain maximum output speed while ensuring that gloss remains consistent across the page.

* Optional accessory for Finisher/Saddle Finisher.

** 20 lb. Bond (75gsm)



The **Press Console** improves operability and gives you access to features such as the Media Library.

Advanced Image Transfer Belt (AITB) transfers all four colors to the page in a single pass for a better impression on a wider range of specialty, coated, and uncoated stocks.

Advanced Feeding Technologies ensure reliable and accurate paper feeding.

The **Escape Tray** is where multifeed sheets from the POD Decks are routed, without stopping the press.

Tray Indicators are illuminated to show you how much paper remains in a tray.

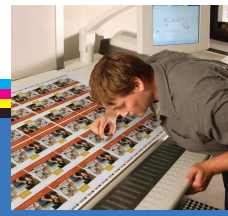
The **POD Decks** hold any supported stock, in any tray, up to 13" x 19.2." Each POD Deck has three trays with a total capacity of 4,000 sheets.** Add a second POD Deck to increase total capacity to 10,000 sheets.**

Twin Red Laser Imaging produces precise, clear, higher-resolution images.

The **E Drum** was engineered for optimum image transfer and durability.

Standard Paper Capacity is 2,000 sheets.**
1,000 sheets of paper fit in each of the two standard trays. Both trays hold any supported stock.

PRODUCTIVITY



ENGINEERED FOR EFFICIENCY AND DEPENDABILITY

The Canon imagePRESS C6000VP digital press is built to provide the dependability and consistency you need to meet your production schedules.

IT'S DESIGNED TO AVOID SLOWDOWNS AND DOWNTIME AND HELP YOU REACH YOUR FULL POTENTIAL FOR PRODUCTIVE, PROFITABLE OPERATIONS.

MAXIMUM PRODUCTIVITY

Within production environments, one of the most important measures of success is how efficiently jobs get out the door. For this reason the imagePRESS C6000VP digital press maintains engine-rated speed of 60 ppm (letter), regardless of paper weight.

ON-THE-FLY PAPER AND TONER REPLACEMENT

Because you don't have to stop the press to refill paper trays, replace toner bottles, or change the waste toner bottle, you can deliver more jobs within the tight deadlines today's customers expect.

ADVANCED FEEDING TECHNOLOGY

Press operators don't have to intervene as frequently if paper stocks are fed reliably. For greater stability as each sheet is fed into the press, **Suction Feeding** technology picks up the top sheet with air instead of rollers. Also, **Enhanced Air-Assist** and **Air-Separation Technologies** help minimize paper friction. This keeps sheets separated and prevents them from double feeding.

MULTIFEED DETECTION TECHNOLOGY

In the unlikely event that more than one sheet enters the press at the same time, Multifeed Detection diverts the sheets to the Escape Tray on top of the POD Deck without stopping the press. Press operators can then focus on getting other jobs in and out of your shop, without having to waste time clearing paper jams.



Toner Station

M+W

M+W

M+W

BEAUTIFUL CLOTHES
HEAD TO TOE

Manager's Private Sale
Spring Shoe Spectacular!
Starts This Thursday Two Days Only!

SAVE AT LEAST
20%* OFF
ALREADY LOW PRICES

Sign up online at
www.m+w.com/edgewater
to receive an email reminder
and advance notice on other
manager specials.

Kmart® Retail • Adidas® • Old Navy® • Sears® • J.C. Penney® • Kohl's® • Target® • Wal-Mart® • M+W® • Gap® • Gap Inc.® • Gap Kids® • Gap Baby® • Gap Maternity® • Gap Home® • Gap Accessories® • Gap Footwear® • Gap Eyewear® • Gap Jewelry® • Gap Beauty® • Gap Pet® • Gap Kids® • Gap Baby® • Gap Maternity® • Gap Home® • Gap Accessories® • Gap Footwear® • Gap Eyewear® • Gap Jewelry® • Gap Beauty® • Gap Pet®

VERSATILITY



ADVANCED PAPER HANDLING AND MULTIPLE FINISHING CAPABILITIES MAKE IT EASY TO MANAGE AND DELIVER A WIDE RANGE OF JOBS.

With the imagePRESS C6000VP digital press, you can accept a wide range of jobs and accurately schedule and price each one. The press can be used to produce applications ranging from business cards, postcards, and newsletters to brochures, self-mailers, and booklets.

MANY DIFFERENT PAPER TYPES

Canon's imagePRESS C6000VP digital press can handle a wide selection of uncoated and coated stocks in a variety of sizes and weights. The press can accept sheets ranging from 7.2" x 7.2" up to 13" x 19.2" and any custom size in between. It can handle everything from lightweight 17 lb. Bond to rugged 110 lb. Cover stock. The two standard trays and POD Decks are easily adjustable to accommodate the stocks you choose.

MORE PAPER, READY AT ALL TIMES

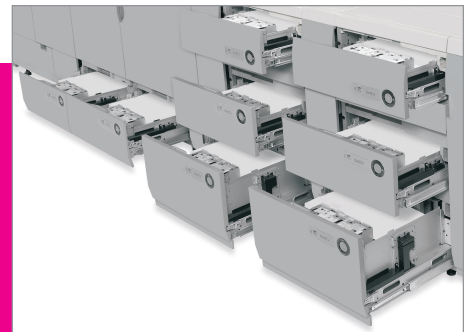
When you use the optional **POD Deck** along with the two paper trays included with the imagePRESS C6000VP digital press, you can have five different stocks ready to go at all times. The POD Deck includes three trays: two that hold 1,000 sheets and one that holds 2,000 sheets. Add a second POD Deck and you can have 10,000 sheets and/or eight different stocks ready to print. If space is a concern, the 3500-sheet **Paper Deck** is an economical alternative to the POD Deck.

MEDIA LIBRARY

The Media Library simplifies the task of maintaining output quality and operational efficiencies when running a variety of stocks. After you enter and store the properties of the paper you plan to run, the imagePRESS C6000VP digital press will make the necessary operational adjustments each time you select a different paper from the library. This makes it possible to schedule and successfully complete a variety of jobs in a shorter period of time.

MULTIPLE FINISHING OPTIONS

With the multiple finishing options available with the imagePRESS C6000VP digital press, you can develop new products and enter new markets. Your imagePRESS C6000VP digital press can be equipped with multiple high-capacity document stackers, a saddle finisher for making booklets, a perfect binder to create professional-looking booklets, and a face-side booklet trimmer. Other finishing options include a plain finisher for basic stapling, a hole puncher for documents that will be inserted into binders, and an inserter for efficiently adding heavier weight covers to booklets.



POD Decks and Standard Trays

*20 lb. Bond (75gsm)



CHOOSE THE CONTROLLER THAT'S RIGHT FOR YOUR WORKFLOW

Choose the option that supports the type of work you do now *and* the work you plan to do tomorrow.

The imagePRESS C6000VP digital press can be configured with either a Canon Controller or one of two Fiery®-based imagePRESS Servers. As your business evolves over time, you can upgrade from one controller to another.

CANON CONTROLLER

In environments with basic graphic-processing requirements, the Canon Controller can send and control jobs directly from your desktop. Users can access and adjust documents in the print queue and choose the appropriate paper and finishing mode. Capabilities include Secured Print, Print-to-Mail Box, and Edit & Preview.

imagePRESS SERVERS

For production environments with more challenging requirements, Canon offers the imagePRESS Server A3100 and imagePRESS Server A2100. Both include ColorWise® color management software, Spot-On® capabilities for accurate reproduction of PANTONE® colors, and Hot Folders to eliminate the time-consuming chore of configuring print settings for multiple jobs.

The **imagePRESS Server A3100** is more powerful and can handle graphic-intensive, VDP projects even in the most demanding print-production environments. It features dual processors, advanced color management and proofing capabilities, document and device security measures, and diagnostic tools for on-press adjustments. The imagePRESS Server A3100 can handle late-stage PDF editing and works seamlessly with popular VDP applications. It can integrate with JDF for production management and cost control and can work with EFI® MIS and Web-to-print solutions as well as other Canon or third-party digital printing systems. The imagePRESS Server A3100 gives you the flexibility to create personalized marketing materials and benefit from the newest opportunities in production printing.

The **imagePRESS Server A2100** is for mid- to high-end production environments that require increased efficiency in order to manage a greater volume and variety of work. This server includes high-speed processing, tools for color-accurate hard-copy and soft proofing, and paper-simulation features for previewing jobs or color-matching offset-printed jobs. It includes tools for static and variable data print (VDP) jobs, local and remote job submission, paper stock management, tab insertion, and advanced control of the print queue. The imagePRESS Server A2100 helps create a more automated, unified workflow to reduce labor, avoid errors, shorten preparation time, and increase productivity in busy environments with a variety of customers.



imagePRESS
Server A3100

imagePRESS
Server A2100

Specifications

MARKING ENGINE

Technology:	Laser Electrostatic Transfer System
Resolution:	Up to 1200 x 1200 dpi
Halftones:	256-Level Grayscale
Print Speed	
Simplex:	60 ppm (Letter)* 30 ppm (11" x 17")* 26.8 ppm (13" x 19")*
Duplex/Perfect:	60 ipm (Letter)* 30 ipm (11" x 17")* 26.8 ipm (13" x 19")*
Maximum Paper Size:	13" x 19.2"
Paper Feeding	
Standard:	2,000 Sheets (20 lb. Bond)
Maximum:	10,000 Sheets (20 lb. Bond) with Optional 2 POD Decks
Acceptable Paper Weight:	17 lb. Bond to 110 lb. Cover (64g/m ² to 300g/m ²) (All Trays)
Duplexing/Perfecting:	Automatic Duplex/Perfect Any Supported Stock
Power Source:	3-Phase 208V/30A
Dimensions (H x W x D):	Approx. 52.4" x 101.8" x 44.7" (1330mm x 2586mm x 1135mm)
Weight:	Approx. 2,645 lb. (1,200kg)

INPUT ACCESSORIES

POD Deck-A1

Paper Capacity:	4,000 Sheets (1,000 x 2 + 2,000) (20 lb. Bond)
Minimum Paper Size:	7.2" x 7.2"
Maximum Paper Size:	13" x 19.2"
Paper Weight:	17 lb. Bond to 110 lb. Cover (64g/m ² to 300g/m ²)
Dimensions (H x W x D):	Approx. 43.1" x 38.9" x 31.2" (1095mm x 987mm x 792mm)
Weight:	Approx. 551 lb. (250kg)
Power Source:	208V/15A

Secondary POD Deck-A1

Paper Capacity:	4,000 Sheets (1,000 x 2 + 2,000) (20 lb. Bond)
Minimum Paper Size:	7.2" x 7.2"
Maximum Paper Size:	13" x 19.2"
Paper Weight:	17 lb. Bond to 110 lb. Cover (64g/m ² to 300g/m ²)
Dimensions (H x W x D):	Approx. 43.1" x 31.9" x 31.2" (1095mm x 811mm x 792mm)
Weight:	Approx. 507 lb. (230kg)
Power Source:	From POD Deck-A1

Paper Deck-AC1

Paper Capacity:	3,500 Sheets (20 lb. Bond)
Paper Size:	Letter, Letter-R, Legal, 11" x 17", 12" x 18", 13" x 19"
Paper Weight:	17 lb. Bond to 110 lb. Cover (64g/m ² to 300g/m ²)
Dimensions (H x W x D):	Approx. 22.4" x 23.7" x 24.4" (570mm x 601mm x 621mm)
Weight:	Approx. 112 lb. (51kg)
Power Source:	From Marking Engine

Stack Bypass-A1

Paper Capacity:	100 Sheets (20 lb. Bond)
Minimum Paper Size:	5.5" x 7.2"
Maximum Paper Size:	13" x 19.2"
Paper Weight:	17 lb. Bond to 140 lb. Index (64g/m ² to 256g/m ²)

Color Image Reader-H1

Image Sensor:	CCD
Document Size:	Statement to 11" x 17"
Resolution:	600 x 600 dpi, 256 Gradations
Dimensions (H x W x D):	Approx. 4.1" x 28.8" x 23.4" (105mm x 732mm x 595mm)
Weight:	Approx. 38.5 lb. (17.5kg)
Power Source:	From Marking Engine
DADF (Duplex Automatic Document Feeder)-R1	
Tray Capacity:	100 Sheets (20 lb. Bond)
Scanning Speed:	Up to 80 ipm (300 dpi) Up to 50 ipm (600 dpi)

Acceptable Original Size:	Statement to 11" x 17"
Acceptable Paper Weight:	13 lb. Bond to 80 lb. Cover (50gsm to 216gsm)
Dimensions (H x W x D):	Approx. 5.6" x 25.4" x 22.4" (143mm x 646mm x 569.5mm)
Weight:	Approx. 47.3 lb. (21.5kg)
Power Source:	From Marking Engine

FINISHING ACCESSORIES

High-Capacity Stacker-C1

Offset Stack Capacity:	5,000 Sheets (20 lb. Bond)
Top Tray Capacity:	1,000 Sheets (20 lb. Bond)
Maximum Paper Size:	13" x 19.2"
Acceptable Paper Weight:	17 lb. Bond to 110 lb. Cover (64g/m ² to 300g/m ²)
Number of Units Connected at Once:	Up to 2
Dimensions (H x W x D):	Approx. 48.8" x 33.9" x 30.1" (1240mm x 860mm x 765mm)
Weight:	Approx. 440 lb. (200kg)
Power Source:	115V/15A (Second Stacker Receives Power from First Stacker)

Perfect Binder-B1

Cutting Method:	Stack Rotation 3-Direction or 1-Direction Cut
Finished Book Size (After 3-Direction Cutting):	5.4" x 7.99" (138mm x 203mm) to 8.5" x 11.69" (216mm x 297mm)
Book Thickness:	10 to 200 Sheets (20 lb. Bond) (up to 25mm)
Warm-Up Time:	440 Seconds
Trim Range (Adjustable in 0.5mm Increments)	
Side:	.26" to 1.95" (6.5mm to 49.5mm)
Top and Bottom:	.26" to 1.56" (6.5mm to 39.5mm)
Dimensions (H x W x D):	53.5" x 36.3 x 31.1" (1359mm x 922mm x 790mm)
Weight:	Approx. 697 lb. (316kg)
Power Source:	208V/15A

Finisher-AB1/Saddle Finisher-AB2

Number of Trays:	2 to 3
Tray Capacity	
Top Tray:	3,000 Sheets (20 lb. Bond)
Lower Tray:	2,000 Sheets (20 lb. Bond)
Saddle-Stitch Tray:	30 Booklets or Limitless
Staple Positions:	Corner Stapling, Double Stapling
Acceptable Paper Weight	
Finisher:	17 lb. Bond to 110 lb. Cover (64g/m ² to 300g/m ²)
Saddle Finisher:	17 lb. Bond to 110 lb. Cover (64g/m ² to 300g/m ²)

Acceptable Paper Size	
Stapling:	Executive, Statement-R, Letter-R, Letter, Legal, 11" x 17"
Sheet Stacking:	Up to 13" x 19.2"
Saddle Finisher:	Letter-R, Legal, 11" x 17", 12" x 18"
Max. Stapling Capacity:	Up to 100 Sheets
Max. Booklet Stapling Capacity:	Up to 20 Saddle-Stitched Sheets
Dimensions (H x W x D):	Approx. 46.5" x 31.5" x 31.2" (1180mm x 800mm x 792mm)

Weight	
Finisher:	Approx. 278 lb. (126kg)
Saddle Finisher:	Approx. 392 lb. (178kg)
Power Source:	208V/15A

Booklet Trimmer-C1

Margin Trimming:	Open-end Only
Trim Amount:	0.08" to 0.78" (2mm to 20mm)
Trim Thickness:	40 Sheets
Waste Tray Capacity:	1,500 Sheets of Trimmed Strip
Acceptable Paper Weight:	17 lb. Bond to 110 lb. Cover (64g/m ² to 300g/m ²)

Output Tray Capacity:	30 Booklets
Dimensions (H x W x D):	Approx. 40.9" x 62" x 30.3" (1040mm x 1575mm x 770mm)
Weight:	Approx. 335 lb. (152kg)
Power Source:	From Finisher

Puncher Unit-V1 (Option for Finisher/Saddle Finisher)

Punch Method:	Press Punch System
Max. Paper Weight:	17 lb. Bond to 110 lb. Index (64g/m ² to 200g/m ²)
Paper Sizes	
2-Hole:	Legal, Letter-R
3-Hole:	11" x 17", Letter
Punch Speed:	Up to 70 ppm (Depends on Speed of Marking Engine)
Power Source:	From Finisher

Document Insertion Unit-C1 (Option for Finisher/Saddle Finisher)

Number of Trays:	2
Capacity	
Upper Tray:	200 Sheets
Lower Tray:	200 Sheets
Acceptable Paper Weight:	17 lb. Bond to 110 lb. Cover
Acceptable Paper Size	
Upper Tray:	7.2" x 7.2" to 11.6" x 13"
Lower Tray:	7.2" x 7.2" to 13" x 19.2"
Dimensions (H x W x D):	Approx. 8.4" x 24.6" x 26.3" (213mm x 625mm x 667mm)
Weight:	Approx. 37.5 lb. (17kg)
Power Source:	From Finisher
*Regardless of paper weight	

Canon
*image*ANYWARE

1-800-OK-CANON
www.usa.canon.com

Canon U.S.A., Inc.
One Canon Plaza
Lake Success, NY 11042

Efi, Fiery, ColorWise, and Spot-On are registered trademarks of Electronics for Imaging, Inc. in the U.S. Patent and Trademark Office and/or certain other foreign jurisdictions. PANTONE is a registered trademark of Pantone, Inc. CANON is a registered trademark and IMAGEPRESS is a trademark of Canon Inc. in the United States and may also be registered trademarks or trademarks in other countries. IMAGEANYWARE is a trademark of Canon. All referenced product names and other marks are trademarks of their respective owners. Specifications and availability subject to change without notice.
©2008 Canon U.S.A., Inc. All rights reserved.

Federal Law prohibits copying of certain documents. Violators may be subject to penalties. We suggest that you check with your own legal counsel. Canon U.S.A., Inc. and Canon Canada Inc. intend to cooperate with Law Enforcement Agencies in connection with claims of unauthorized copying.



0119W010
0308-C6000VP-35M-LTM

