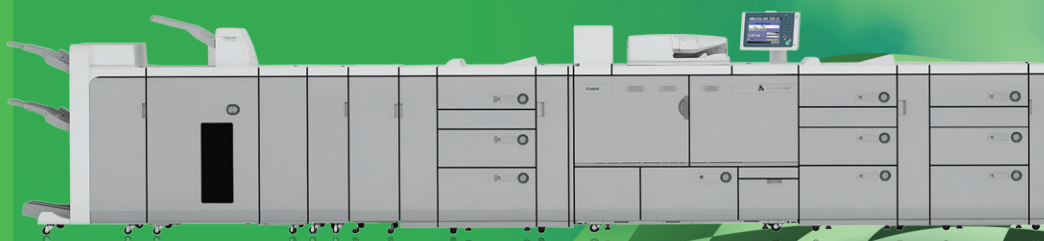


**Canon**

 **imagePRESS**  
**1135+/1125+/1110+**



# DYNAMIC

 **imagePRESS**  
1135+  
1125+  
1110+



# PERFORM



HIGH-SPEED OUTPUT ON A VARIETY OF MEDIA TYPES





Delivering quality, productivity, and versatility. Presses designed to maximize productivity while delivering consistency, from the first print to the last.

### Building business

Since its 2007 introduction of the C7000VP model, Canon's imagePRESS® digital presses have been helping to build and reinvigorate businesses with their dynamic performance.

Canon prides itself on partnering with customers and understanding their needs. And through its historical investment of eight percent of annual revenue in research and development, Canon continually strives to develop products and solutions that meet—and often exceed—customers' evolving needs.

The imagePRESS 1135+/1125+/1110+ systems are the latest evolution in Canon's monochrome production press line-up, engineered to deliver image quality, productivity, and versatility.

### Market leadership

This commitment to the future has helped build Canon's position as an industry leader in high-quality digital imaging. The imagePRESS platform was developed entirely within Canon, comprising one of the largest investments for a single product group in the company's history.

Canon has leveraged its foundations in imaging excellence to build a high-quality product, and it has made a financial commitment to the challenging production marketplace. A new generation of monochrome imagePRESS systems continues to redefine performance and expectations of customers—print professionals in commercial print shops, quick printers, in-plants, and CRDs.

### A quality difference you can see

imagePRESS 1135+/1125+/1110+ digital presses are designed to provide key improvements identified as crucial to business growth and success in the monochrome print market. Through Canon's focus on these improvements and its commitment to excellence, the imagePRESS 1135+/1125+/1110+ digital presses deliver high-quality output, streamlined production, solid reliability, and finishing flexibility for exceptional production performance and dynamic results.



HIGH-QUALITY OUTPUT

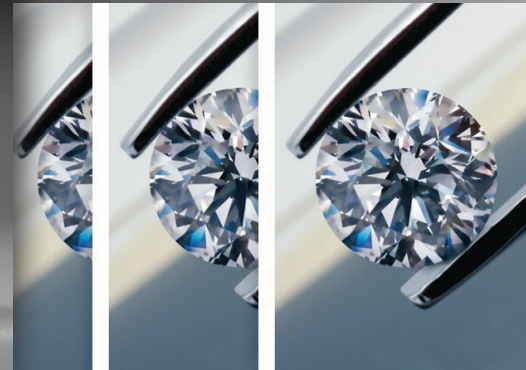
USER-FRIENDLY OPERATION

ROBUST FINISHING OPTIONS

# IMAGE QUALITY



ACCURATE REGISTRATION



CONSISTENT IMAGE QUALITY

## A synergy of technologies creating image quality consistency.

Extraordinary image quality combines with digital print advantages to ensure that the last piece looks as good as the first.

### Quality you can see

The advanced imaging technology of imagePRESS 1135+/1125+/1110+ digital presses renders very fine details through the entire tonal range of the image, adding visual depth and delivering exceptional image quality. The Canon imagePRESS Series uses Canon's monocomponent eB toner—which contains micro-dispersed pigments—to produce a pure, unmixed black. A true resolution of 1200 x 1200 dpi and full 256 grayscale gradations produce the fine lines needed for detailed technical diagrams and small text sizes as well as rich, deep blacks for superb halftones.

### Accurate registration

Canon's active registration system makes real-time adjustments during printing to ensure that each page is accurately aligned, front to back—one of the hallmarks of professional document production. This precision and accuracy helps turn reliable, high-quality production of manuals, booklets, brochures, and books into a profitable reality for your business.

### Consistency from start to finish

To ensure the last piece in every job looks as good as the first, Canon has optimized the image quality consistency of the halftone density in the imagePRESS 1135+/1125+/1110+ digital presses. Add to this Canon's twin-sleeve technology, which distributes toner evenly across the page for faithful reproduction of images and text, ultra-smooth gradations, and consistent quality throughout the job.

#### AUTO GRADATION ADJUSTMENT

This feature allows an operator to maintain accurate and consistent density throughout the day.

#### CANON FINE CHARACTER AND EDGE TECHNOLOGY

Automatic adjustments for character proportion, screen processing, and line width help ensure clear, crisp text and images.

#### A SMALLER LASER SPOT

This produces 1200-dpi resolution for superb text, fine lines, and halftones.



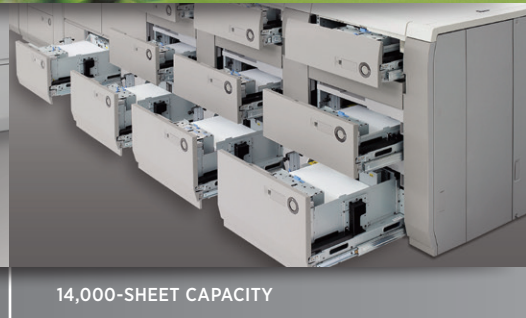
# PRODUCTIVITY



SUCTION FEEDING



UNATTENDED OPERATION



14,000-SHEET CAPACITY

## Advanced technologies that help keep jobs racing ahead and profitable.

Real-world productivity advantages that add value to your print operation.

### Maximum uptime

Productivity is about keeping your press running—every interruption costs time and money.

**On-the-fly replacement** of paper, toner, and even waste toner containers keeps jobs flowing through the press.

**Ultrasonic multifeed detection** diverts any multisheet feeds to an escape tray while maintaining throughput.

### Accurate registration

The monochrome imagePRESS Series uses Active Registration Technologies (ART) that actively adjust during print runs to help ensure consistency at high speeds for non-stop operation. Four separate rollers address de-skewing, positioning, and timing on the fly to ensure that images and text are placed in the same location on every sheet of paper passing through the press.

### Advanced paper feeding

The imagePRESS 1135+/1125+/1110+ digital presses have features that produce reliable, accurate feeding just like a traditional press.

#### SUCTION FEEDING

Picks up the top sheet with air, not rollers, similar to an offset press. It also stabilizes the page as it enters the press.

#### AIR ASSIST AND AIR SEPARATION

Reduces paper friction and keeps sheets separated to prevent double-feeding and operator intervention to clear misfeeds.

### Unattended operation

With the ability to hold up to 14,000\* sheets and a high-capacity toner supply, the imagePRESS 1135+/1125+/1110+ digital presses can run unattended for an hour or more. This allows your team members to operate multiple machines, perform additional functions, and make your operation more productive overall.

### Complex job productivity

Complex job production is the backbone of monochrome digital production. The imagePRESS 1135+/1125+/1110+ digital presses maximize complex job productivity. And with their expanded media handling capabilities and latest ease-of-use features, they minimize operator intervention and improve production efficiency.

\* imagePRESS 1135+/1125+ only. Up to 10,000 sheets maximum for imagePRESS 1110+.

# DYNAMIC PERFORMANCE

## Designed for profitable productivity.

The Canon imagePRESS Series delivers the cutting-edge technologies, media capabilities, and finishing options that will help drive your business ahead.

### Booklet Trimmer Modules

Used with the Saddle-Stitch Finisher to produce professional, full-bleed booklets in-line.

### Perfect Binder

Bind up to 400-page\* book blocks to covers with hot glue, and trim three sides for perfectly square, full-bleed books.

### Professional Puncher and Integration Unit

Interchangeable die sets provide a variety of punch patterns, and the Integration Unit ensures delivery in correct orientation to other finishing modules.

### Saddle-Stitch Finisher

Stitches up to 25 sheets,\* up to 13"x19.2", for creation of 100-page booklets. V-fold up to five sheets without saddle-stitching.

### Folding Unit

In-line folding



C-fold



Z-fold



Half-fold



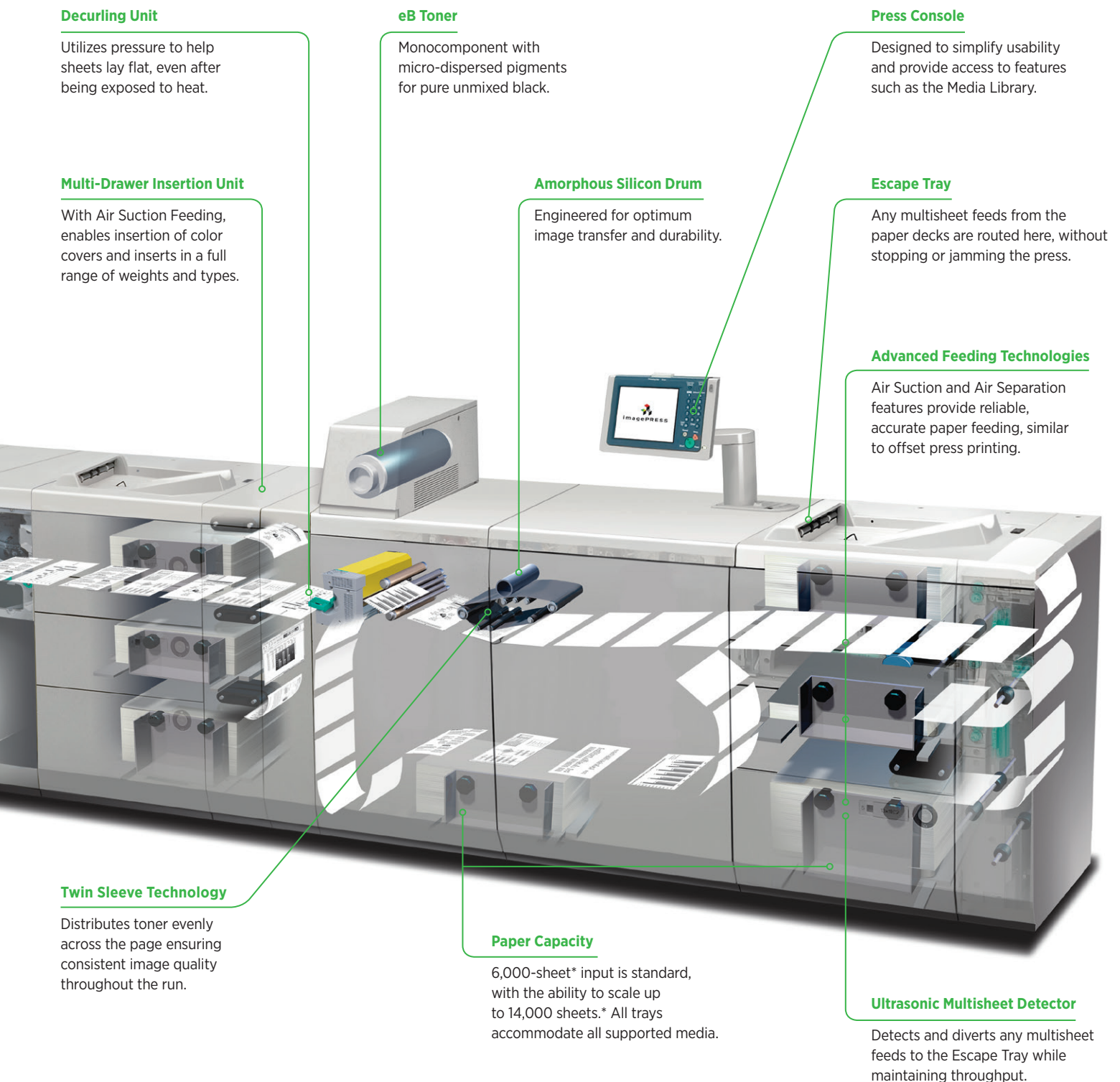
Accordion fold



Double-parallel fold

### High-Capacity Stacker

Stack flat sheets professionally and utilize a removable dolly to transfer output to off-line finishing or shipping departments.





# VERSATILITY



FINISHING MODULES



Embedded  
imagePRESS  
Printer Kit-A1

imagePRESS Servers K200/K100†

CONTROLLER OPTIONS

## Innovative features deliver flexibility, efficiency, and performance.

With the Canon black-and-white imagePRESS Series, you can configure multiple controller choices, a range of finishing options, and a host of media capabilities to meet your needs.

### Multiple speeds

The imagePRESS 1135+/1125+/1110+ digital presses are designed from the ground up to ensure that tight deadlines and last-minute jobs are kept on schedule. No matter what your print environment or workload, fast print speeds of 135, 125, and 110 pages per minute, respectively, can be matched to your production requirements—and help keep revenue flowing in.

### Generous input and output capacity

Need more productivity for peak volumes? Your system can be configured with up to 10 input trays that hold 14,000 sheets<sup>††</sup> plus the Multi-Drawer Document Insertion Unit for an additional 4,000 sheets of inserts or covers, providing hours of uninterrupted productivity. Combine both high-capacity stackers and the finisher to stack up to 27,000 sheets of output at once. Such versatility lets you do more faster while reducing labor, training, and operating costs.

### Serious processing power

One of the most extensive collections of controllers available lets you choose the optimal level of power and functionality. Commercial shops, quick printers, and in-plant operations alike can choose the RIP solution that fits their needs.

### Supported media

The imagePRESS 1135+/1125+/1110+ systems support a broad range of substrates, so you can satisfy almost every customer need. And it's easy to mix media types within a job to provide professional-quality documents quickly and profitably.

#### IMPRESSIVE SCALABILITY

<b>Saddle Finisher</b>	V-folds up to five (5) sheets without stapling and stitches up to 25 sheets* for creation of 100-page booklets.
<b>Folding Unit</b>	Offers Half-fold, C-fold, Z-fold, Accordion fold, Double Parallel fold.
<b>Professional Punching</b>	Numerous die patterns available for productive, in-line document preparation.
<b>Booklet Trimmer Modules</b>	Use with the Saddle Finisher to create full-bleed, saddle-stitched booklets.
<b>Square Fold Booklet-Maker with Two-Knife Trimmer</b>	Provides square-edge booklets for professional-looking results.
<b>Perfect Binder</b>	Bind book blocks to covers with hot glue and trim three sides for perfectly square, full-bleed books.
<b>JDF Enabled**</b>	For support of existing near-line finishing.

† imagePRESS Servers K200/K100 are powered by Fiery.

†† imagePRESS 1135+/1125+ only. Up to seven trays and up to 10,000 sheets maximum for imagePRESS 1110+.

\* Based on 20 lb. Bond paper.

\*\* Controller and workflow dependent.



# USABILITY



ON-THE-FLY TECHNOLOGIES



AUTOMATED MEDIA SETTINGS

## Simplified operation and over-the-top capabilities.

Extensive and simplified user controls help make it easy for any operator to produce professional printed products.

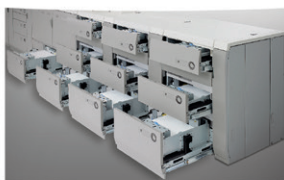
### Media controls

Every print service provider knows that the wider the range of papers a press can handle, the more jobs that can be produced, and the better the customers' needs can be satisfied.

On the black-and-white imagePRESS Series, up to 10 paper trays provide a capacity of up to 14,000 sheets.<sup>††</sup> Supported stocks can be placed in any tray, and stock selection can be edited and managed from the operator panel. Press output for each media is optimized by specifying such factors as basis weight, type, and coating. For a more simplified setup, operators can select from an array of standard paper selections, each with automated settings to control output.

### Media Handling

The imagePRESS 1135+/1125+/1110+ digital presses offer expanded media handling with improved support of carbonless papers, allowing for easy integration of these jobs into the print queue.



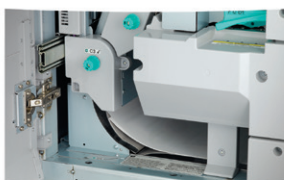
### Non-stop Performance

Trays can be reloaded without stopping the press, enabling jobs to be queued so your imagePRESS digital press can run for hours.



### Active Registration Technologies (ART)

Excellent side-to-side and front-to-back registration is ensured by actively adjusting paper movement during print runs to provide consistency at high speeds with non-stop operation.

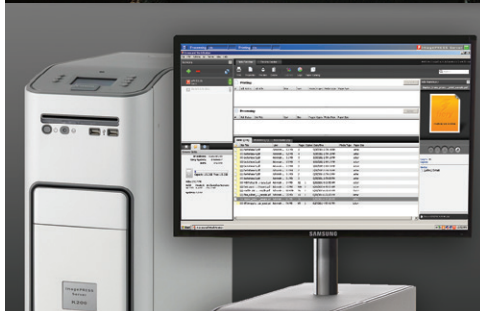


### Paper Clearance

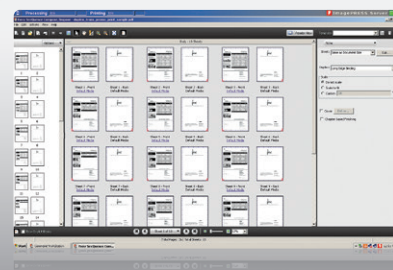
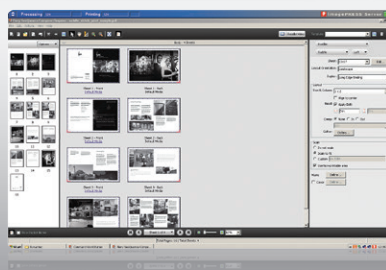
The imagePRESS 1135+/1125+/1110+ systems offer enhanced media handling features for faster, more efficient clearing of misfeeds.

<sup>††</sup> imagePRESS 1135+/1125+ only. Up to seven trays and up to 10,000 sheets maximum for imagePRESS 1110+.

# CONTROL



DRAG-AND-DROP SIMPLICITY



INTEGRATED PRE-PRESS AND MAKE-READY TOOLS

## Dynamic performance, intuitive controls, and easy scalability.

Succeeding in today's competitive marketplace demands extraordinary versatility. The imagePRESS Servers K200/K100 are designed to deliver flexible, reliable performance in operations like yours.

### A legacy of leadership

Canon offers a range of controllers that let you choose the power and functionality to fit your production needs. These controllers are designed to work seamlessly with the imagePRESS 1135+/1125+/1110+ Series, providing you with reliable, cost-effective choices that match the needs of your operation.

The embedded imagePRESS Printer Kit-A1 is ideal for small shops, allowing connected users to access features available at the engine UI, right from their desktop.

The imagePRESS Server K100 is a high-performance, base-level server for smaller printing operations that want optimal print quality and job processing efficiency without paying for more capabilities than needed.

The imagePRESS Server K200 is a powerhouse, delivering optimum speed and performance. It offers the ability to automate and simplify setup and processing of a full range of higher-value documents.

### K200/K100 Specifications

imagePRESS Server	K200	K100
<b>Printer Compatibility</b>	Canon imagePRESS 1135+/1125+/1110+	
<b>Software Version</b>	Fieri System 10	
<b>CPU</b>	Intel® Core™ i5-660, 3.33GHz Processor	Intel® Pentium® E5300, 2.6GHz Processor
<b>System Memory</b>	2GB RAM	
<b>Hard Disk Configuration</b>	500GB HDD	250GB HDD
<b>Operating Software</b>	Windows 7 Professional Embedded Systems 32/64-bit	
<b>Fieri Utilities</b>	Fieri Driver 4.4 Windows, 4.4 Mac; Fieri Command WorkStation 5.X; Fieri WebTools™	
<b>Fieri Image Quality</b>	Fieri Image Smoothing; Fieri Image Quality; Image Enhance (in-RIP); Black Custom Screening; Fieri ImageViewer for Black-and-White*	
<b>Productivity and Workflow</b>	Spool-RIP-Print simultaneously; Adobe® PDF Print Engine 2 Support; Fieri JDF Support; Fieri Hot Folders/Virtual Printers; Booklet-Maker; Pad Printing; Set Page Device support; Sequential Printing	
<b>Fieri SeeSequence Suite</b>	Standard	Optional
<b>Security</b>	IP Filtering, Secure Erase, Backup and Restore, Fieri Clone Tool, Encryption of critical information, Removable HDD**	
<b>Variable Data Printing</b>	Fieri FreeForm™ v1 Enhanced and v2.1; PPML v2.2, PDF/VT-1; PODi certified; Creo VPS Compatible; Optimized PostScript® and Optimized PDF	
<b>File Support Standard</b>	Adobe® PostScript® Levels 1, 2, 3; Adobe PDF Version 1.5-1.7; PDF-X1a, 3 and 4; EPS; Microsoft Office Document Formats: doc, xls, ppt, pub (via Hot Folders)	
<b>File Support Optional</b>	JPEG, DCS 2.0, CT/LW, 1-bit TIFF, TIFF, TIFF/IT, PDF2Go	

\*Optional for imagePRESS Server K100

\*\*Optional



# SUSTAINABILITY



Part Code	Part Name	Consumption Rate (%)	Unit	Part Life
WST-100	Waste Toner Container	0.06-1.4	Number of Sheets of Paper	34
D-100	Drum Unit (C)	0.27-2.0	Number of Sheets of Paper	150
D-100	Drum Unit (M)	0.27-2.0	Number of Sheets of Paper	150
D-100	Drum Unit (Y)	0.27-2.0	Number of Sheets of Paper	150
ITB-100	ITB Cleaning Blade	0.27-2.0	Number of Sheets of Paper	150
PCB-100	Primary Charging Wire Unit	0.27-2.0	Number of Sheets of Paper	150
DR-100	Drum Unit (C) Consumption Level (percent)	1.00	Number of Sheets of Paper	150
DR-100	Drum Unit (M) Consumption Level (percent)	1.00	Number of Sheets of Paper	150
DR-100	Drum Unit (Y) Consumption Level	1.00	Number of Sheets of Paper	150

## imageWARE REMOTE DIAGNOSTICS



## ON-SITE TECHNICAL SUPPORT TRAINING

## Impressive uptime and dependability with a low environmental impact.

No matter what type of operation you manage, you'll value the sustainability benefits, reliability, and serviceability of the imagePRESS Series.

### Built to perform

Top-quality, durable parts increase reliability, enhance productivity, and help minimize downtime. imagePRESS 1135+/1125+/1110+ digital presses are designed and built with rigid metal construction for the longevity you need for non-stop performance, day-in and day-out. The new imagePRESS 1135+/1125+/1110+ digital presses feature increased life of several key parts and components to increase uptime and help your press meet the demands of your deadline-oriented environment.

### Canon service

#### Customer Productivity

For those customers who prefer having trained technical support on site, your servicing dealer can train one or more key operators to perform proactive maintenance, cleaning, replacement of certain critical parts, and print quality diagnostics.

#### Association of Technical Service Professionals (ATSP) Program

Canon's voluntary ATSP provides testing that recognizes technicians' expertise as technical and service support providers.

#### imageWARE Remote Diagnostics

When activated, the award-winning imageWARE Remote software allows the servicing dealer to receive meter information as well as immediate notification of errors, jams, and alerts by e-mail.

### COMMITMENT TO THE ENVIRONMENT

Support of **Recycled Media Stock**.

**VOC-free Consumables** are used in the imagePRESS Series of digital presses.

**Recyclable toner bottles** and recycling program offered.

All imagePRESS models are **RoHS Compliant**.

Sleep and Low Power modes **lower total electric consumption** to help control your overall operating costs.



# PRODUCT SPECIFICATIONS



## MARKING ENGINE

Technology:	Laser Electrostatic Transfer System
Resolution:	Up to 1200 x 1200 dpi
Halftones:	256-Level Grayscale
Simplex Print Speed:	135/125/110 (Letter) 77/74/68 (11" x 17")
Duplex Print Speed:	67/62/55 (Letter) 38/37/34 (11" x 17")
Maximum Paper Size:	13" x 19.2"
Standard Paper Feeding:	2,000 Sheets (20 lb. Bond)
Paper Weight (All Trays)	
Uncoated:	14 lb. Bond to 110 lb. Cover (52gsm to 300gsm)
Coated:	24 lb. Bond to 90 lb. Cover (80gsm to 240gsm)
Duplex/Perfect:	Automatic Duplex/Perfect Any Supported Stock
Power Source:	208V/20A+208V/15A
Dimensions (H x W x D):	54.12" x 54.62" x 31.87" (1373mm x 1387mm x 809mm)
Weight:	1,103 lb. (500kg)
Estimated Toner Yield:	69,000 Impressions†

## INPUT ACCESSORIES

### Color Image Reader-L1 (Optional)

(Includes Single-Pass Duplex Automatic Document Feeder)

Image Sensor:	CMOS
Acceptable Original Size:	Statement to 11" x 17"
Resolution:	Up to 600 x 600 dpi
Grayscale Gradations:	256
Tray Capacity:	300 Sheets (20 lb. Bond)
Scanning Speed B/W:	Up to 200 ipm (300 dpi) Up to 120 ipm (600 dpi)
Scanning Speed Color:	Up to 80 ipm (300 dpi) Up to 40 ipm (600 dpi)*
Paper Weight:	14 lb. Bond to 120 lb. Index (50gsm to 220gsm)
Dimensions (incl. DADF) (H x W x D):	7.125" x 23.25" x 25" (179mm x 590mm x 635mm)
Weight (incl. DADF):	81.6 lb. (37kg)
Power Supply:	From Main Unit

### POD Deck-C1

(One Standard and up to Two Additional; Optional\*\*)

Paper Capacity:	4,000 Sheets (1,000 x 2 + 2,000) (20 lb. Bond)
Maximum Paper Size:	13" x 19.2"
Paper Weight (All Trays)	
Uncoated:	14 lb. Bond to 110 lb. Cover (52gsm to 300gsm)
Coated:	24 lb. Bond to 90 lb. Cover (80gsm to 240gsm)
Dimensions (H x W x D):	43.12" x 29.37" x 31.25" (1095mm x 745mm x 792mm)
Weight:	499 lb. (226kg)
Power Source:	120-127VAC, 60Hz, 15A

### Multi-Drawer Document Insertion Unit-A1 (Optional)

Paper Capacity:	4,000 Sheets (1,000 x 2 + 2,000) (20 lb. Bond)
Maximum Paper Size:	13" x 19.2"
Paper Weight:	14 lb. Bond to 110 lb. Cover (52gsm to 300gsm)
Dimensions (H x W x D):	43.12" x 42.5" x 31.25" (1095mm x 1079mm x 792mm)
Weight:	554 lb. (251kg)
Power Source:	120V/15A

### Document Insertion Unit-F1 (Optional)\*\*\*

Paper Capacity:	400 Sheets (200 x 2) (20 lb. Bond)
Maximum Paper Size:	13" x 19.2"
Paper Weight:	14 lb. Bond to 110 lb. Cover (52gsm to 300gsm)
Dimensions (H x W x D):	55.37" x 29.37" x 31.25" (1407mm x 746mm x 793mm)
Weight:	134 lb. (61kg)
Power Source:	120V/15A

## FINISHING ACCESSORIES

### Finisher-AK1/Saddle Finisher-AK2 (Optional)

Number of Trays:	2/3
Top Tray Capacity:	Up to 1,000 Sheets (20 lb. Bond)
Lower Tray Capacity:	4,000 (20 lb. Bond)
Saddle-Stitch Tray:	30 Booklets or Limitless
Staple Positions:	Corner-Stapling, Double-Stapling
Paper Weight	
Finisher:	14 lb. Bond to 110 lb. Cover (52gsm to 300gsm)
Saddle Finisher:	14 lb. Bond to 110 lb. Cover (52gsm to 300gsm)

### Acceptable Paper Size

Stapling:	Executive, Letter-R, Letter, Legal, 11" x 17"
Sheet Stacking:	Up to 13" x 19.2"
Saddle Finisher:	Letter-R, Legal, 11" x 17", 12" x 18", 13" x 19.2"

Max. Stapling Capacity: Up to 100 Sheets (Letter)

Max. Booklet Stapling

Capacity:	Up to 25 Sheets Saddle-Stitched
Dimensions	
Finisher-AK1 (H x W x D):	48.75" x 31.5" x 31.25" (1239mm x 800mm* x 792mm)
Saddle Finisher-AK2 (H x W x D):	48.75" x 31.5" x 31.25" (1239mm x 800mm* x 792mm)

Weight:

Finisher-AK2	287 lb. (130kg)
Saddle Finisher-AK2	397 lb. (180kg)
Power Source:	120V/15A

### Puncher Unit-BS1

(Option for Finisher-AK1/Saddle Finisher-AK2)

Paper Weight:	14 lb. Bond to 110 lb. Cover (52gsm to 300gsm)
---------------	---

### Paper Sizes

2-Hole:	Legal, Letter-R, Custom Size
3-Hole:	11" x 17", Letter, Custom Size, Executive

Punch Speed: Up to 135 ppm (Depends on  
Speed of Marking Engine)

Weight:	6.7 lb. (3kg)
Power Source:	From Finisher

### High-Capacity Stacker-E1 (Optional)\*\*

Offset Stack Capacity:	10,000 Sheets (Letter) (20 lb. Bond)
Top Tray Capacity:	1,000 Sheets (20 lb. Bond)
Maximum Paper Size:	13" x 19.2"
Paper Weight:	14 lb. Bond to 110 lb. Cover (52gsm to 300gsm)
Max. Connectivity:	Up to 2 Units at Once
Dimensions (H x W x D):	53.62" x 39.25" x 31.25" (1362mm x 997mm x 792mm)
Weight:	463 lb. (210kg)
Power Source:	120V/15A

### Booklet Trimmer-D1 (Optional)

Margin Trimming:	Fore-Edge Trim
Trim Amount:	0.08" to 0.78" (2mm to 20mm)
Trim Thickness:	100 Sheets
Waste Tray Capacity:	1,500 Sheets with 0.78" Trim (20 lb. Bond)

Paper Weight:	14 lb. Bond to 110 lb. Cover (52gsm to 300gsm)
---------------	---

Output Tray Capacity:	30 Booklets
Dimensions (H x W x D):	41" x 62" x 30.37" (1040mm x 1575mm x 770mm)
Weight:	335 lb. (152kg)
Power Source:	From Saddle Finisher

### Two-Knife Trimmer-A1 (Optional)

Margin Trimming:	Top and Bottom Trim
Trim Amount:	0.08" to 0.59" (2mm to 15mm)
Trim Thickness:	100 Sheets
Waste Tray Capacity:	750 Sheets (Two-Sided Trimmed)
Paper Weight:	14 lb. Bond to 110 lb. Cover (52gsm to 300gsm)

Output Tray Capacity:	30 Booklets
Dimensions (H x W x D):	41" x 21.12" x 30.37" (1040mm x 536mm x 770mm)
Weight:	319 lb. (145kg)
Power Source:	120V/15A

### Perfect Binder-C1 (Optional)

Cutting Method:	Stack Rotation 3-Direction or 1-Direction Cut
Finished Book Width:	8" to 11.62" (203mm x 297mm)
Finished Book Length:	5.37" to 8.5" (138mm x 216mm) (After 3-Direction Cut)
Body Paper Weight:	14 lb. Bond to 90 lb. Index (52gsm to 163gsm)
Cover Weight:	24 lb. Bond to 110 lb. Cover (90gsm to 300gsm)
Book Thickness:	10 to 200 Sheets (20 lb. Bond) (Up to 25mm)
Glue Warm-Up Time:	440 Seconds
Trim Range:	Adjustable in .0197" (0.5mm) Increments
Side:	0.26" to 1.94" (6.5mm to 49mm)
Top and Bottom:	0.52" to 3.11" (13mm to 79mm)
Dimensions (H x W x D):	51.25" x 36.97" x 31.12" (1300mm x 922mm x 791mm)
Weight:	675 lb. (306kg)
Power Source:	208V/15A

### Paper Folding Unit-F1 (Optional)\*\*\*

Double Parallel Fold:	Legal, Letter-R
C-/Accordion Fold:	Letter-R
Z-fold:	11" x 17", Legal, Letter-R
Half-fold:	Letter-R
Supported Media	14 lb. Bond to 28 lb. Bond (52gsm to 105gsm)
Power Source:	From Finisher
Dimensions (H x W x D):	46.87" x 13.25" x 31.25" (1190mm x 336mm x 793mm)
Weight:	157 lb. (71kg)

### Professional Puncher and Integration Unit-B1 (Optional)

Paper Size:	Letter, Tab
Supported Media	20 lb. Bond to 80 lb. Cover (75gsm to 216gsm)
Weights:	Up to 135 ppm (Depends on Speed of Marking Engine)
Productivity:	25,000 Sheets
Chip Tray Capacity:	3H, 5H, Velo Bind 11H, Plastic Comb 19H, Twin Loop 21H/32H, ProClick 32H, Color Coil 44H
Punch Patterns:	
Power Source:	120V/15A
Dimensions (H x W x D):	41" x 22.5" x 31.25" (1040mm x 560mm x 792mm)
Weight:	264 lb. (120kg)

\* System Upgrade RAM-B1 required for 600-dpi color scanning.

\*\* Requires either the imagePRESS 1135+ or the  
imagePRESS 1125+ to connect three (3) POD Decks.

\*\*\* imagePRESS 1110+ only.

▲ Measures 890mm when extension tray is pulled out for  
Finisher-AK1 and 1060mm when extension tray is pulled out  
for Saddle Finisher-AK2.

▲▲ Only one additional High-Capacity Stacker-E1 attaches to the  
imagePRESS 1110+.

▲▲▲ Requires either the Finisher-AK1 or the Saddle Finisher-AK2.

† Estimated yield based on Letter pages at 6% coverage.

1-800-OK-CANON  
www.usa.canon.com

Canon U.S.A., Inc.  
One Canon Park  
Melville, NY 11747

CANON, IMAGEPRESS, and the GENUINE logo are registered trademarks of Canon Inc. in the United States and may also be registered trademarks or trademarks in other countries. All other referenced product names and marks are trademarks of their respective owners. Specifications and availability subject to change without notice. All printer output images are simulated.

©2013 Canon U.S.A., Inc. All rights reserved.

0913R-1100+SRS-PDF-SP

