

A NEW FORCE IN ENTERPRISE PRINTING HAS ARRIVED.

**LIGHTNING
SPEED
100
PPM¹**



Our massive investment in revolutionary technologies enables us to pay attention to every minute detail. PrecisionCore™, our next generation, high-density printhead, takes a great leap forward in enterprise printing. Epson WorkForce Enterprise printers have arrived, giving you exactly what you need: superior quality, excellent connectivity and print at lightning fast speed.



ISO Print Speed (Simplex/Duplex)¹



High Yield Cartridge²



Duplex Printing



Print Up to A3+



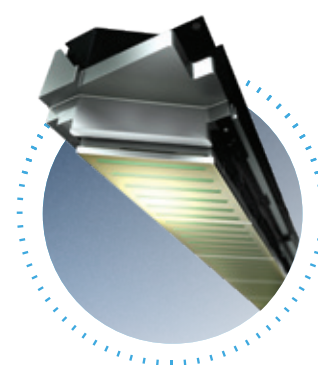
Ethernet



Wi-Fi Direct



Epson Connect



IT'S IN THE DETAILS.

With PrecisionCore linehead technology, Epson WorkForce Enterprise blazes through prints.

Productivity at Breakthrough Speed

Reinvent business printing with print speeds up to 100ppm¹ in both simplex and duplex; matching and even beating most laser printers.

Quality Without Compromise

PrecisionCore linehead with Nozzle Verification Technology delivers consistent high quality prints at ultra-high speed.

Higher Efficiency at Amazing Value

Consumes up to 75% less power³ than laser printers and enjoy low running costs and maintenance downtime.

UNLEASH THE FORCE WITHIN

PRODUCTIVITY AT
BREAKTHROUGH SPEED

Ultra-Fast Printing

Enjoy consistently superb image quality at optimised printing speeds up to 100ppm¹ in both simplex and duplex; due to the WorkForce Enterprise's simple print mechanism.

UP TO
100
PPM
IN BOTH
SIMPLEX AND
DUPLEX

SIMPLEX

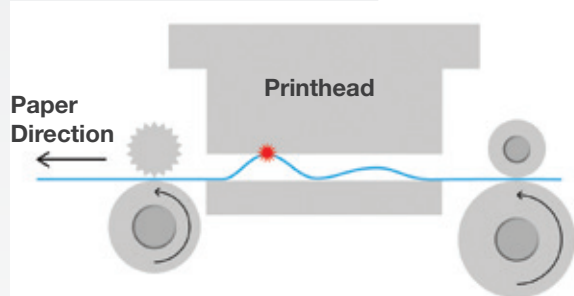


DUPLEX

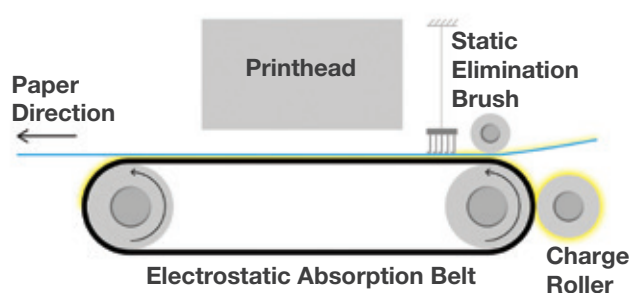


Cross paper print mechanism ensures ultra-fast throughput even in duplex printing.

Conventional Printer



WorkForce Enterprise



The WorkForce Enterprise uses an electrostatic transport belt that ensures the paper is completely flat, enabling the smoothest of gradients and consistently sharp images.

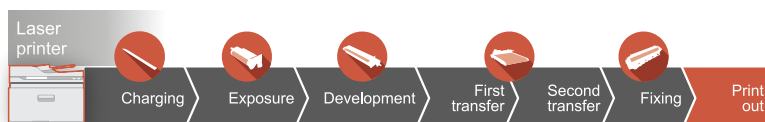
Ultra-Fast First Page Out Time

It only takes approximately 6.2 seconds (WF-C20590) to collect your first page.

There is minimal warm-up time due to the WorkForce Enterprise's simple yet superior technology over laser printers.



Simple, cool, contactless technology



Complex technology using heat and pressure

QUALITY WITHOUT
COMPROMISE



Revolutionary Compact PrecisionCore Linehead Design

PRECISIONCORE

Prints up to A3+

43mm

Advanced built-in Nozzle Verification Technology monitors nozzle health and adjusts print quality automatically without interruption, even during printing.

Print up to 600 x 2400dpi, delivering crisp and sharp text and image reproduction.

DURABrite
Pro
INK

Newly-formulated DURABrite™ Pro Ink - Less bleed-through and improved fast-drying water-resistant pigment ink engineered for high-speed printing while maintaining vivid colour output.



EPSON
EXCEED YOUR VISION



Official Team Partner

AMG
PETRONAS
MOTORSPORT

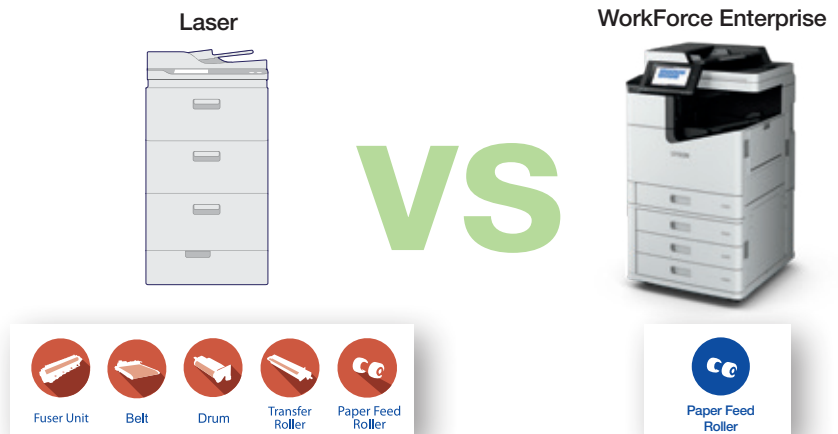
BUILT FOR BUSINESS

HIGHER EFFICIENCY
AT AMAZING VALUE

Incredibly Low Running Costs and Less Downtime

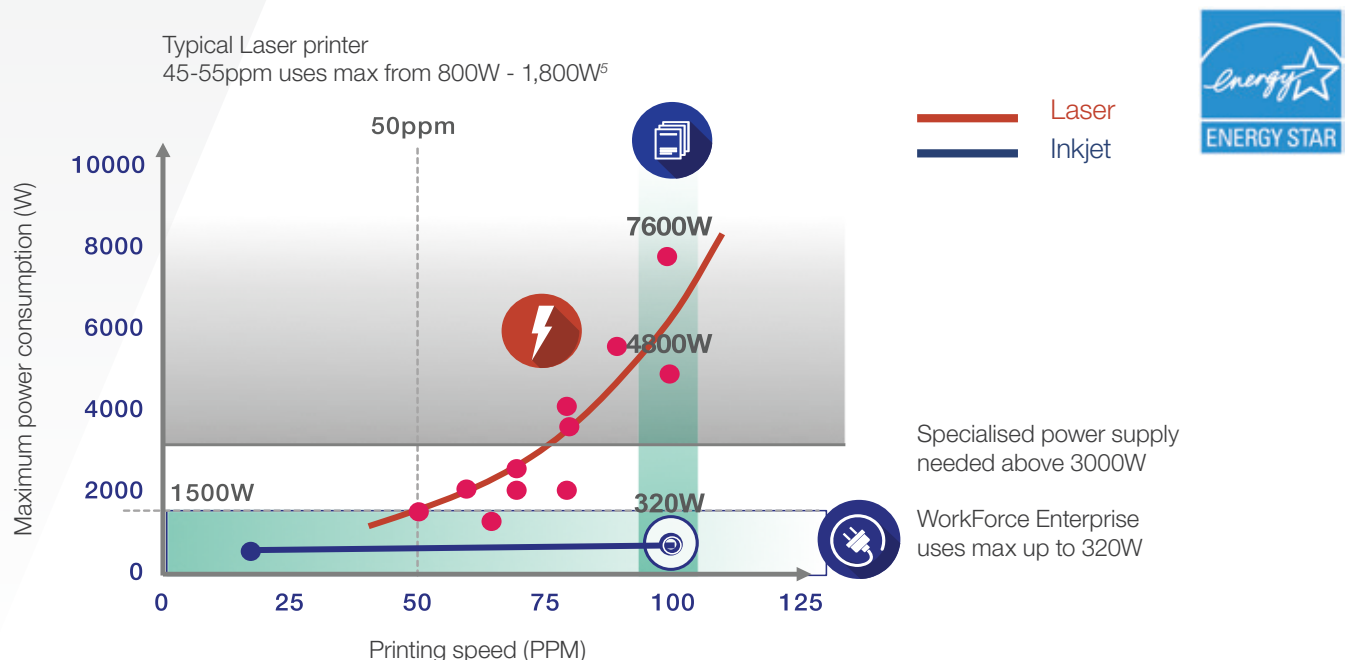
The WorkForce Enterprise features a simple design with fewer moving parts than colour laser printers, resulting in less time and effort, and fewer components required for standard maintenance. This means dramatically reducing your cost of service and downtime.

Parts needing replacement after printing 1 million pages⁴:



Remarkably Low Power Consumption

With minimal heat involved in the printing process, the WorkForce Enterprise consumes up to 75% less power² in a print job compared to a competing laser printer, resulting in higher efficiency for your business and greater positive impact on the environment. Enjoy more cost-savings when you convert to WorkForce Enterprise at TEC values of 0.9kWh (WF-C17590) and 1.3kWh (WF-C20590) per week, which are remarkably low as compared to laser printers.



HASSLE-FREE OPERATION

Friendly Operability

The WorkForce Enterprise makes it easy for large workgroups to print, copy, scan to email and more at ultra-fast speeds. When it comes to replacing the ink, there are no messy toner cartridges to deal with and no waiting for parts to cool.



Enjoy impressive scan speeds of up to 60ppm/110ipm in duplex. The dual CIS technology allows convenient duplex scanning in a single pass.

Easy front access door to the printer's ink cartridges makes replacement fast and hassle-free.



Easy removal of jammed paper with easy-to-follow instructions from the printer.



The intuitive 9" touchscreen panel with a user-friendly interface makes it simple to operate the printer.



Easy refill of paper with these cassette trays that can be opened smoothly and effortlessly.



COMPREHENSIVE CONNECTIVITY OPTIONS

Connectivity Features

Ethernet, Wi-Fi,
Wi-Fi Direct, USB 3.0, NFC

Mobile and Remote Printing

• Epson Connect

Epson Email Print, Epson Remote Print Driver, Epson iPrint, Epson Print and Scan, Epson Creative Print

• Other Mobile Solutions

Google Cloud Print™, Mopria™ Print Service, Easy Photo Scan, Scan to Cloud

For more information, visit www.epson.com.sg/connect

AN OFFICE SUPERPOWER

EXPANDABLE FOR
HIGHER THROUGHPUT

Ultra-High Paper Capacity and Finisher

WorkForce Enterprise is scalable with your business. You have the option to increase the maximum paper input to 5,350 sheets (80 g/m²) with the High Capacity Tray and expand paper output capabilities to up to 4,000 sheets⁶ (80g/m²) with the Finisher Unit.



Ultra-High Capacity Cartridges

Engineered for high-speed printing, the WorkForce Enterprise powers through without interruption with its high capacity cartridges which yield up to 50,000 pages⁷ of high quality prints.



High yield waste ink box to support high volume printing

WIDE MEDIA HANDLING CAPABILITY

Diverse Paper Media Printing

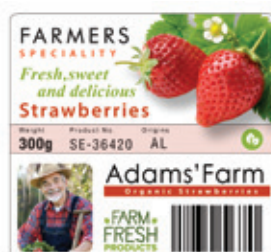
With Epson's superior inkjet technology and smart design, the WorkForce Enterprise is able to support printing up to A3+ size on a wide range of media types of varying thickness (up to 350 g/m²) and length (up to 1.2m), using the Multipurpose Tray.



Textured Paper Certificate

Delivery Note / Invoice (60 g/m²)

Coated Inkjet Paper



Sticker Label



Business Card



Envelope



Promotional Banner (1.2m length)

SEAMLESS AND **SECURE**

ADVANCED WORKFLOW SOLUTIONS

Customisable Workflow Integration

Take advantage of remote management, customise your print options and enjoy seamless compatibility with a wide range of tools and software that can be integrated into your existing IT infrastructure to improve productivity and increase efficiency.

Fleet Management



Epson Device Admin

Free software that allows you to control, analyse and manage your printer fleet centrally from one intuitive interface, designed to increase productivity and reduce costs.



The WorkForce Enterprise is compatible with Epson Print Admin and selected third-party solutions for managing usage limitations, user authentication and more.

Print Management



Epson Print Admin

A server-based solution that creates a secured centralised printing, scanning and copying environment through user-authentication. Advanced reporting functions can help organisations reduce printing costs and run Managed Print Programmes.

Integration with Third Party Solutions

Epson Open Platform

Gain complete control of your printing operations via a range of third-party solutions that enable you to adapt the WorkForce Enterprise to meet specific and changing business requirements with solutions that help you better manage your printing.

Document Management



Document Capture Pro*

Easily scan, view, edit, save and transfer scanned documents. The software optically recognises barcodes, characters and blank pages in scanned documents to separate them into different folders. It allows you to create up to 30 customised job settings, making multiple scan jobs a breeze.



Document Capture Pro Server

WorkForce Enterprise is compatible with Document Capture Pro Servers, making it easy to seamlessly and locally manage documents. Document Capture Pro integrates into document management and cloud storage systems, enabling you to capture, enhance, edit and distribute scanned documents effectively throughout your business.

* Document Capture Pro (Windows), Document Capture (Mac OS X).

ROBUST SECURITY MANAGEMENT FOR PEACE OF MIND



Avoid information leaks

Reduce risk of information leaks by limiting the access to functions for up to 10 user accounts.



Secure device communications

Supports enterprise security protocols including IEEE 802.1x, IPsec and SSL/TLS for email access.



Protect confidential documents

Send print jobs with PIN codes for release on the printer panel.



Limit access by unauthorised PCs

Restrict user access by filtering IP addresses and/or ports.



LDAP support

Integration with a company's existing directory service.



IPv6 support

Future-proof network compatibility and security.



SPECIFICATIONS

WORKFORCE ENTERPRISE WF-C17590/C20590

Model Number	WF-C17590	WF-C20590
Printing		
Printing Technology	PrecisionCore™ Linehead Inkjet Technology	
Nozzle Configuration	8,676 nozzles each colour (Black, Cyan, Magenta, Yellow)	
Maximum Resolution	600 x 2,400 dpi	
Default Black Resolution	600 x 1,200 dpi	
Minimum Ink Droplet Volume	4.4 pl	
Print Speed		
ISO 24734, A4, Simplex / Duplex	Approx. 75 ipm / 75 ipm (Black / Colour)	Approx. 100 ipm / 100 ipm (Black / Colour)
ISO 24734.2, A3, Simplex	Approx. 41.2 ipm / 41.2 ipm (Black / Colour)	Approx. 54.3 ipm / 54.3 ipm (Black / Colour)
ISO 24734.2, A3, Duplex	Approx. 25.4 ipm / 25.4 ipm (Black / Colour)	Approx. 36.3 ipm / 36.3 ipm (Black / Colour)
First Page Out Time	Approx. 7.0 sec / 7.0 sec (Black / Colour)	Approx. 6.2 sec / 6.2 sec (Black / Colour)
Printer Language	ESC/P-R, ESC/P-RJ, ESC/Page, ESC/Page-Colour, PostScript3	
Printer Control Language Emulations	PCL5c / PCL6 / PostScript3 / PDF(ver1.7)	
Maximum Monthly Duty Cycle ⁹	400,000 pages per month	
HDD Capacity	320GB (encrypted)	
Automatic 2-sided printing	Yes	
Copying		
Copy Speed		
ISO 29183, A4, Simplex (Flatbed)	Approx. 75 ipm / 75 ipm (Black / Colour)	Approx. 100 ipm / 100 ipm (Black / Colour)
ISO 24735, A4, Simplex (ADF 1:1)	Approx. 75 ipm / 75 ipm (Black / Colour)	Approx. 100 ipm / 100 ipm (Black / Colour)
ISO 24735, A4, Duplex (ADF 1:2 / 2:2)	Approx. 75 ipm / 75 ipm (Black / Colour)	Approx. 95 ipm / 95 ipm (Black / Colour)
Maximum Copies from Standalone	9,999 copies	
Max Copy Resolution	600 x 1,200 dpi	
Reduction/Enlargement	25 - 400%, Auto Fit Function	
Copy Paper Size (Flatbed)	A3, B4, Legal, 8.5" x 13", Letter, A4, B5, A5, B6, A6, 16K, 8K, Envelopes: #10, DL, C4, C5, C6	
Maximum Copy Size	A3	
Scanning		
Scanner Type	Flatbed colour image scanner	
Sensor Type	CIS	
Optical Resolution	600 x 1,200 dpi	
Maximum Scan Area	297.18 x 431.8 mm (11.7 x 17")	
Scanner Bit Depth		
Colour	30-bit input, 24-bit output	
Grayscale	10-bit input, 8-bit output	
Black & White	10-bit input, 1-bit output	
Scan Features	Scan to Memory Device, Scan to Network Folder/FTP, Scan to Email, Scan to Computer (Document Capture Pro), Scan to Computer (WSD)	
Scan Speed (Mono / Colour)		
Flatbed 200 dpi	A4: 3.7 sec, A3: 4.7 sec	
ADF 200 dpi	A4 (Simplex / Duplex): 60 ppm / 110 ipm	
(ISO 17991, Scan to Folder)	A3 (Simplex / Duplex): 30 ppm / -	
ADF Function		
Support Paper Weight	52-128 g/m²	
Paper Capacity	150 sheets (80 g/m²)	
Automatic 2-sided Scan / Copy / Fax	Yes	
Support Paper Size	A6 - A3	
Fax Function		
Type of Fax	Walk-up black-and-white and colour fax capability	
Receive Memory / Page Memory	6 MB, Page memory Up to 550 pages (ITU-T No.1 chart)	
Error Correction Mode	ITU Group3 fax with Error Correction Mode	
Fax Speed (Data transfer rate)	Up to 33.6kbps, Approx. 3sec/page	
Fax Resolution		
Black & White	Standard: 8pels/mm x 3.85lines/mm, Fine: 8pels/mm x 7.7lines/mm, Super Fine: 8pels/mm x 15.4lines/mm, Ultra Fine: 16pels/mm x 15.4lines/mm, Photo: 8pels/mm x 7.7lines/mm	
Colour	Fine: 200 x 200 dpi, Photo: 200 x 200 dpi	
Transmission Paper Size		
Flatbed	A5, B5, Letter, A4, Legal, B4, A3, 11 x 17"	
ADF	A5, Half Letter, B5, Letter, A4, Legal, B4, A3, 11 x 17"	
Receiving Paper Size	A5, Half Letter, B5, Letter, A4, Legal, B4, A3, 11 x 17"	
Speed Dial / Group Dial	Up to 2,000 numbers, 1,999 groups	
Fax Features	PC Fax (Transmission/Receive), Automatic redial, Address book, Delay Send, Transmit Reservation (50 cases), Broadcast Fax (Mono Only)	
Paper Handling		
Number of Paper Trays (Standards)	5 (Paper Cassettes: 4, MP Tray: 1)	
Paper Hold Capacity		
Input Capacity	Up to 2,350 sheets (80 g/m²) (Paper Cassettes 1 - 4: 550 x 4 + MP Tray: 150 sheets)	
Maximum Input Capacity	Up to 5,350 sheets (80 g/m²) (Paper Cassettes 1 - 4: 550 x 4 + MP Tray: 150 sheets + High Capacity Feeder Unit: 3,000 sheets)	
Output Capacity	Up to 700 sheets (80 g/m²) (Face Down Tray: 550 sheets, Face Up Tray: 150 sheets)	
Maximum Output Capacity	Up to 4,900 sheets (80 g/m²) (Face Down Tray: 550 sheets, Face Up Tray: 150 sheets, Finisher Tray: 4,000 sheets, Finisher Tray 2 ⁹ : 200 sheets)	
Support Paper Size	A3+, A3, A4, B5, A5, A6, 5x7", 4x6", Legal, 8.5" x 13", Letter, Envelopes: #10, DL, C6, C5, C4	
Maximum Paper Size	Paper Cassettes 1 - 4: A3 MP Tray: A3+, 330 x 1200mm (12.95 x 47.24")	
Support Paper Weight	Paper Cassettes 1 - 4: 60 - 160 g/m² MP Tray: 60 - 350 g/m²	

Dimensions & Weight WF-C17590 / C20590

Weight (including supplies): 186.1kg (410.3lb)



WF-C17590 / C20590 with Optional Finisher and High Capacity Tray

Weight (including supplies): 318kg (701.1lb)



Model Number	WF-C17590	WF-C20590	
Printer Interface			
USB	USB 3.0		
Network	Ethernet (1000BASE-T/100BASE-TX/10BASE-T), Wi-Fi (IEEE 802.11b/g/n), Wi-Fi Direct, NFC		
Network Protocol	TCP/IPv4, TCP/IPv6		
Network Printing Protocol	LPD, IPP, PORT9100, WSD		
Network Management Protocols	SNMP, HTTP, DHCP, BOOTP, APIPA, PING, DDNS, mDNS, SNTp, SLP, WSD, LLTD		
Security Features	Limit Access Function, PIN No. Certification, LDAP Address Book, IP Address Filtering, Panel Admin Mode		
USB Host Function			
Type of Direct Printing	Memory Devices		
USB Host	USB Host (Scan to memory device / Storage function)		
Direct Print Paper Size	A3+, A3, B4, Legal, Letter, A4, B5, A5, B6, A6, 16K, 8K, Envelopes: #10, DL, C4, C5, C6		
Mobile and Remote Printing			
Epson Connect	Epson iPrint, Epson Email Print, Remote Print Driver, Scan to Cloud		
Other Mobile Solutions	Google Cloud Print, Mopria Print Service		
Control Panel			
LCD Screen	9.0" / 22.7cm TFT Colour LCD		
Printer Software			
Operating System Compatibility	Windows XP / Vista / 7 / 8 / 8.1 / 10		
	Windows Server 2003 / 2008 / 2012 / 2016		
	Only printing and scanning functions are supported for Windows Server OS.		
	Mac OS X 10.6.x or later		
Electrical Specifications			
Rated Voltage	100-240V Universal		
Rated Frequency	50 - 60 Hz		
Power Consumption (Main Unit only)			
Operating	170W	180W	
Standby	77W		
Sleep	1.4W		
Power off	0.4W		
Noise Level			
PC Printing / Plain Paper Default ¹⁰	7.3 B(A), 57 dB(A)	7.5 B(A), 59 dB(A)	
Consumables	Page Yield⁷	Order Code (WF-C17590)	Order Code (WF-C20590)
High Capacity Ink Cartridge (Black)	50,000 pages	C13T887100	C13T858100
High Capacity Ink Cartridge (Cyan)	50,000 pages Composite Yield	C13T887200	C13T858200
High Capacity Ink Cartridge (Magenta)		C13T887300	C13T858300
High Capacity Ink Cartridge (Yellow)		C13T887400	C13T858400
Waste Ink Box	-	C13T671300	
Staple Cartridge for Finisher (set of 3 x 5,000 staples each)	C13S210061		
Options	Order Code		
Finisher with Bridge Unit	C12C933081 & C12C933261 (Purchased together)		
High Capacity Tray	C12C933041		
Paper Cassette Lock (set of 4)	C12C933231		
Optional Finisher			
Output Capacity	Stacker Tray: Up to 4,000 sheets ⁶ (80g/m ²) Tray 2 (for fax output only): up to 200 sheets (80 g/m ²)		
Finisher Functions	Shift Sorting, Staple		
Staple Capability	Up to 50 sheets ¹¹ (60 - 90 g/m ²)		
Supported Paper Size for Staple	A3, A4, B4, B5(LEF), Legal(SEF), Letter, 8K, 16K		
Staple Functions	Automatic Staple for 3 positions, Manual Staple		
Maximum Power Consumption	Less than 165W		
Optional High Capacity Tray			
Input Capacity	Up to 3,000 sheets (80 g/m ²)		
Support Paper Weight	60 - 160 g/m ²		
Support Paper Size	A4, Letter		
Maximum Power Consumption	Less than 21W		



© 2018 Epson Singapore Pte Ltd. All Rights Reserved. Reproduction in part or in whole, without the written permission from Epson, is strictly prohibited. EPSON and EXCEED YOUR VISION are registered trademarks of Seiko Epson Corporation. All other products names and other company names used herein are for identification purposes only and are the trademarks or registered trademarks of their respective owners. Epson disclaims any and all rights in those marks. Print samples shown are simulations only. Specifications and product availability are subject to change without notice and may vary between countries. Please check with local Epson offices for more information.

Dealer's Stamp

Information correct at time of printing
Printed March 2018

Disclaimers:

¹ Up to 100ppm for WF-C20590. Black and colour print speeds are measured in accordance with ISO/IEC 24734. Actual print times will vary based on system configuration, software, and page complexity. For more information, visit www.epson.com.sg/printspspeed

² Up to 100,000 pages in black with 2 black ink cartridges.

³ Energy used by the WorkForce Enterprise while copying is 180W (WF-C20590) and 170W (WF-17590), compared to an average of competitor A3 laser/LED MFPs capable of 55-65ppm showing "Energy Used While Copying" data available in BLI database (Feb 2017).

⁴ Based on Epson internal testing methodology.

⁵ Max power used while copying for competitor colour A3 laser/LED MFPs capable of 45-55ppm showing "Energy Used While Copying" data as available in BLI database (Feb 2017).

⁶ For simplex printing only.

⁷ Replacement cartridge yields are based on ISO/IEC 24711 tests in Default Mode printing continuously. Cartridge yields vary considerably for reasons including images printed, print settings, temperature and humidity. Yields may be lower when printing infrequently or predominantly with one ink colour. All ink colours are used for printing and printer maintenance, and all colours have to be installed for printing. For print quality, part of the ink from the included cartridges is used for printer start and a variable amount of ink remains in the cartridges after the "replace cartridge" signal. For more information, visit www.epson.com.sg/inkinfo

⁸ The maximum number of printed pages per month is based on the performance capabilities of the printer, including ISO rated print speeds and paper handling capabilities.

⁹ Finisher Tray 2 for Fax output only.

¹⁰ Default mode in accordance with ISO7779 for MFPs.

¹¹ Up to 50 sheets for letter, A4 and B5 size. Up to 30 sheets for A3, B4, Legal and 8.5 x 13"

EPSON

EXCEED YOUR VISION



EpsonSingapore



@epsonsingapore



EpsonSoutheastAsia



Epson Singapore

For latest specifications, visit www.epson.com.sg/enterpriseprinting or call **+65 800 120 5564**